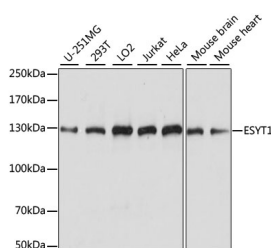


ESYT1 Polyclonal Antibody

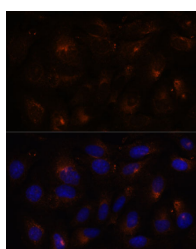
Catalog No.	E-AB-65305	Reactivity	H,M,R
Storage	Store at -20°C. Avoid freeze / thaw cycles.	Host	Rabbit
Applications	WB,IF	Isotype	IgG

Note: Centrifuge before opening to ensure complete recovery of vial contents.

Images



Western blot analysis of extracts of various cell lines using ESYT1 Polyclonal Antibody at dilution of 1:1000.



Immunofluorescence analysis of U-2 OS cells using ESYT1 Polyclonal Antibody at dilution of 1:100. Blue: DAPI for nuclear staining.

Immunogen Information

Immunogen	Recombinant fusion protein of human ESYT1 (NP_056107.1).
GeneID	23344
Swissprot	Q9BSJ8
Synonyms	ESYT1,FAM62A,MBC2

Product Information

Calculated MW	122kDa/124kDa
Observed MW	123kDa
Buffer	PBS with 0.02% sodium azide, 50% glycerol, pH7.3.
Purify	Affinity purification
Dilution	WB 1:200-1:2000 IF 1:50-1:200

Background

ESYT1 (Extended Synaptotagmin 1) is a Protein Coding gene. Diseases associated with ESYT1 include Stormorken Syndrome and Myopathy, Tubular Aggregate, 1. Among its related pathways are Sphingolipid metabolism and Metabolism. Gene Ontology (GO) annotations related to this gene include lipid binding and phospholipid binding. An important paralog of this gene is ESYT2.

For Research Use Only

Thank you for your recent purchase.
If you would like to learn more about antibodies, please visit www.elabscience.com.

Focus on your research Service for life science

Applications: WB-Western Blot IHC-Immunohistochemistry IF-Immunofluorescence IP-Immunoprecipitation FC-Flow cytometry ChIP-Chromatin Immunoprecipitation Reactivity: H-Human R-Rat M-Mouse Mk-Monkey Dg-Dog Ch-Chicken Hm-Hamster Rb-Rabbit Sh-Sheep Pg-Pig Z-Zebrafish X-Xenopus C-Cow.