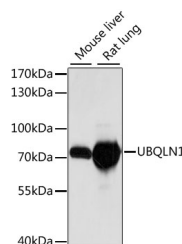


UBQLN1 Polyclonal Antibody

| | | | |
|---------------------|---|-------------------|--------|
| Catalog No. | E-AB-65316 | Reactivity | M,R |
| Storage | Store at -20°C. Avoid freeze / thaw cycles. | Host | Rabbit |
| Applications | WB | Isotype | IgG |

Note: Centrifuge before opening to ensure complete recovery of vial contents.

Images



Western blot analysis of extracts of various cell lines using UBQLN1 Polyclonal Antibody at dilution of 1:1000.

Immunogen Information

| | |
|------------------|---|
| Immunogen | Recombinant fusion protein of human UBQLN1 (NP_038466.2). |
| GeneID | 29979 |
| Swissprot | Q9UMX0 |
| Synonyms | UBQLN1,DA41,DSK2,PLIC-1,UBQN,XDRP1 |

Product Information

| | |
|----------------------|---|
| Calculated MW | 18kDa/43kDa/59kDa/62kDa |
| Observed MW | 70kDa |
| Buffer | PBS with 0.02% sodium azide, 50% glycerol, pH7.3. |
| Purify | Affinity purification |
| Dilution | WB 1:200-1:2000 |

Background

This gene encodes an ubiquitin-like protein (ubiquilin) that shares a high degree of similarity with related products in yeast, rat and frog. Ubiquilins contain an N-terminal ubiquitin-like domain and a C-terminal ubiquitin-associated domain. They physically associate with both proteasomes and ubiquitin ligases, and thus are thought to functionally link the ubiquitination machinery to the proteasome to affect in vivo protein degradation. This ubiquilin has also been shown to modulate accumulation of presenilin proteins, and it is found in lesions associated with Alzheimer's and Parkinson's disease. Two transcript variants encoding different isoforms have been found for this gene.

For Research Use Only

Thank you for your recent purchase.
If you would like to learn more about antibodies, please visit www.elabscience.com.

Focus on your research Service for life science

Applications: WB-Western Blot IHC-Immunohistochemistry IF-Immunofluorescence IP-Immunoprecipitation FC-Flow cytometry ChIP-Chromatin Immunoprecipitation Reactivity: H-Human R-Rat M-Mouse Mk-Monkey Dg-Dog Ch-Chicken Hm-Hamster Rb-Rabbit Sh-Sheep Pg-Pig Z-Zebrafish X-Xenopus C-Cow.