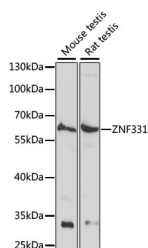


ZNF331 Polyclonal Antibody

Catalog No.	E-AB-65330	Reactivity	M,R
Storage	Store at -20°C. Avoid freeze / thaw cycles.	Host	Rabbit
Applications	WB	Isotype	IgG

Note: Centrifuge before opening to ensure complete recovery of vial contents.

Images



Western blot analysis of extracts of various cell lines using ZNF331 Polyclonal Antibody at dilution of 1:1000.

Immunogen Information

Immunogen	Recombinant fusion protein of human ZNF331 (NP_061025.5).
GeneID	55422
Swissprot	Q9NQX6
Synonyms	ZNF331,RITA,ZNF361,ZNF463

Product Information

Calculated MW	53kDa
Observed MW	56kDa
Buffer	PBS with 0.02% sodium azide, 50% glycerol, pH7.3.
Purify	Affinity purification
Dilution	WB 1:200-1:2000

Background

This gene encodes a zinc finger protein containing a KRAB (Kruppel-associated box) domain found in transcriptional repressors. This gene may be methylated and silenced in cancer cells. This gene is located within a differentially methylated region (DMR) and shows allele-specific expression in placenta. Alternative splicing and the use of alternative promoters results in multiple transcript variants encoding the same protein.

For Research Use Only

Thank you for your recent purchase.
If you would like to learn more about antibodies, please visit www.elabscience.com.

Focus on your research Service for life science

Applications: WB-Western Blot IHC-Immunohistochemistry IF-Immunofluorescence IP-Immunoprecipitation FC-Flow cytometry ChIP-Chromatin Immunoprecipitation Reactivity: H-Human R-Rat M-Mouse Mk-Monkey Dg-Dog Ch-Chicken Hm-Hamster Rb-Rabbit Sh-Sheep Pg-Pig Z-Zebrafish X-Xenopus C-Cow.