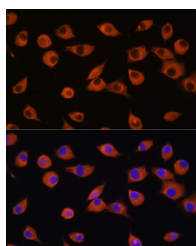


DNER Polyclonal Antibody

Catalog No.	E-AB-65359	Reactivity	H,M,R
Storage	Store at -20°C. Avoid freeze / thaw cycles.	Host	Rabbit
Applications	IF	Isotype	IgG

Note: Centrifuge before opening to ensure complete recovery of vial contents.

Images



Immunofluorescence analysis of L929 cells using DNER Polyclonal Antibody at dilution of 1:100. Blue: DAPI for nuclear staining.

Immunogen Information

Immunogen	Recombinant fusion protein of human DNER (NP_620711.3).
GeneID	92737
Swissprot	Q8NFT8
Synonyms	DNER,UNQ26,bet

Product Information

Buffer	PBS with 0.02% sodium azide, 50% glycerol, pH7.3.
Purify	Affinity purification
Dilution	IF 1:50-1:200

Background

DNER (Delta/Notch Like EGF Repeat Containing) is a Protein Coding gene. Diseases associated with DNER include Impulse Control Disorder and Kleptomania. Among its related pathways are Signaling by GPCR and Notch Signaling Pathway (WikiPathways). Gene Ontology (GO) annotations related to this gene include calcium ion binding and clathrin binding. An important paralog of this gene is NOTCH4.

For Research Use Only

Thank you for your recent purchase.
If you would like to learn more about antibodies, please visit www.elabscience.com.

Focus on your research Service for life science

Applications: WB-Western Blot IHC-Immunohistochemistry IF-Immunofluorescence IP-Immunoprecipitation FC-Flow cytometry ChIP-Chromatin Immunoprecipitation Reactivity: H-Human R-Rat M-Mouse Mk-Monkey Dg-Dog Ch-Chicken Hm-Hamster Rb-Rabbit Sh-Sheep Pg-Pig Z-Zebrafish X-Xenopus C-Cow.