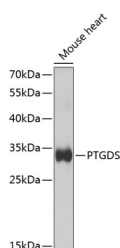


## PTGDS Polyclonal Antibody

|                     |   |                   |        |
|---------------------|---|-------------------|--------|
| <b>Catalog No.</b>  | E-AB-62883                                  | <b>Reactivity</b> | H,M,R  |
| <b>Storage</b>      | Store at -20°C. Avoid freeze / thaw cycles. | <b>Host</b>       | Rabbit |
| <b>Applications</b> | WB,IF                                       | <b>Isotype</b>    | IgG    |

**Note:** Centrifuge before opening to ensure complete recovery of vial contents.

### Images



Western blot analysis of extracts of Mouse heart using PTGDS Polyclonal Antibody at 1:500 dilution.

### Immunogen Information

|                  |   |
|------------------|---|
| <b>Immunogen</b> | Recombinant fusion protein of human PTGDS |
| <b>GeneID</b>    | 5730                                      |
| <b>Swissprot</b> | P41222                                    |
| <b>Synonyms</b>  | PTGDS,L-PGDS,LPGDS,PDS,PGD2,PGDS,PGDS2    |

### Product Information

|                      |   |
|----------------------|---|
| <b>Calculated MW</b> | 21kDa   |
| <b>Observed MW</b>   | 28KDa   |
| <b>Buffer</b>        | PBS with 0.02% sodium azide,50% glycerol,pH7.3. |
| <b>Purify</b>        | Affinity purification                           |
| <b>Dilution</b>      | WB 1:500-1:2000,IF 1:50-1:100                   |

### Background

The protein encoded by this gene is a glutathione-independent prostaglandin D synthase that catalyzes the conversion of prostaglandin H<sub>2</sub> (PGH<sub>2</sub>) to prostaglandin D<sub>2</sub> (PGD<sub>2</sub>). PGD<sub>2</sub> functions as a neuromodulator as well as a trophic factor in the central nervous system. PGD<sub>2</sub> is also involved in smooth muscle contraction/relaxation and is a potent inhibitor of platelet aggregation. This gene is preferentially expressed in brain. Studies with transgenic mice overexpressing this gene suggest that this gene may be also involved in the regulation of non-rapid eye movement sleep.

#### For Research Use Only

Thank you for your recent purchase.  
 If you would like to learn more about antibodies, please visit [www.elabscience.com](http://www.elabscience.com).

**Focus on your research  
 Service for life science**

Applications:WB-Western Blot IHC-Immunohistochemistry IF-Immunofluorescence IP-Immunoprecipitation FC-Flow cytometry ChIP-Chromatin Immunoprecipitation Reactivity: H-Human R-Rat M-Mouse Mk-Monkey Dg-Dog Ch-Chicken Hm-Hamster Rb-Rabbit Sh-Sheep Pg-Pig Z-Zebrafish X-Xenopus C-Cow.