

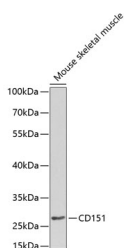
## CD151 Polyclonal Antibody

**Catalog No.** E-AB-60507  
**Storage** Store at -20°C. Avoid freeze / thaw cycles.  
**Applications** WB,IHC

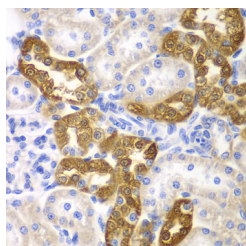
**Reactivity** H,M,R  
**Host** Rabbit  
**Isotype** IgG

**Note:** Centrifuge before opening to ensure complete recovery of vial contents.

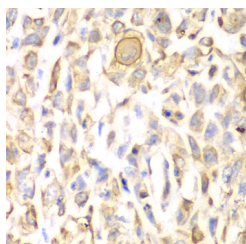
### Images



Western blot analysis of extracts of Mouse skeletal muscle using CD151 Polyclonal Antibody at dilution of 1:1000.



Immunohistochemistry of paraffin-embedded Rat kidney using CD151 Polyclonal Antibody at dilution of 1:200 (40x lens).



Immunohistochemistry of paraffin-embedded Human lung cancer using CD151 Polyclonal Antibody at dilution of 1:200 (40x lens).

### Immunogen Information

**Immunogen** Recombinant fusion protein of human CD151 (NP\_001034579.1).  
**GeneID** 977  
**Swissprot** P48509  
**Synonyms** CD151,GP27,MER2,PETA-3,RAPH,SFA1,TSPAN2 4

### Product Information

**Calculated MW** 28kDa  
**Observed MW** 28kDa  
**Buffer** PBS with 0.02% sodium azide, 50% glycerol, pH7.3.  
**Purify** Affinity purification  
**Dilution** WB 1:500-1:2000 IHC 1:50-1:200

### Background

The protein encoded by this gene is a member of the transmembrane 4 superfamily, also known as the tetraspanin family. Most of these members are cell-surface proteins that are characterized by the presence of four hydrophobic domains. The proteins mediate signal transduction events that play a role in the regulation of cell development, activation, growth and motility. This encoded protein is a cell surface glycoprotein that is known to complex with integrins and other transmembrane 4 superfamily proteins. It is involved in cellular processes including cell adhesion and may regulate integrin trafficking and/or function. This protein enhances cell motility, invasion and metastasis of cancer cells. Multiple alternatively spliced transcript variants that encode the same protein have been described for this gene.

### For Research Use Only

Thank you for your recent purchase.  
If you would like to learn more about antibodies, please visit [www.elabscience.com](http://www.elabscience.com).

### Focus on your research Service for life science

Applications: WB-Western Blot IHC-Immunohistochemistry IF-Immunofluorescence IP-Immunoprecipitation FC-Flow cytometry ChIP-Chromatin Immunoprecipitation Reactivity: H-Human R-Rat M-Mouse Mk-Monkey Dg-Dog Ch-Chicken Hm-Hamster Rb-Rabbit Sh-Sheep Pg-Pig Z-Zebrafish X-Xenopus C-Cow.