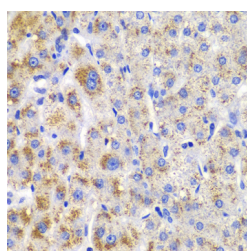


## CBLB Polyclonal Antibody

|                     |   |                   |        |
|---------------------|---|-------------------|--------|
| <b>Catalog No.</b>  | E-AB-60555                                  | <b>Reactivity</b> | H,M    |
| <b>Storage</b>      | Store at -20°C. Avoid freeze / thaw cycles. | <b>Host</b>       | Rabbit |
| <b>Applications</b> | IHC   | <b>Isotype</b>    | IgG    |

**Note:** Centrifuge before opening to ensure complete recovery of vial contents.

### Images



Immunohistochemistry of paraffin-embedded Human liver damage using CBLB Polyclonal Antibody at dilution of 1:200 (40x lens).

### Immunogen Information

|                  |   |
|------------------|---|
| <b>Immunogen</b> | Recombinant fusion protein of human CBLB (NP_733762.2). |
| <b>GeneID</b>    | 868   |
| <b>Swissprot</b> | Q13191  |
| <b>Synonyms</b>  | CBLB,Cbl-b,Nbla00127,RNF56                              |

### Product Information

|                 |   |
|-----------------|---|
| <b>Buffer</b>   | PBS with 0.02% sodium azide, 50% glycerol, pH7.3. |
| <b>Purify</b>   | Affinity purification                             |
| <b>Dilution</b> | IHC 1:50-1:200                                    |

### Background

This gene encodes an E3 ubiquitin-protein ligase which promotes proteasome-mediated protein degradation by transferring ubiquitin from an E2 ubiquitin-conjugating enzyme to a substrate. The encoded protein is involved in the regulation of immune response by limiting T-cell receptor, B-cell receptor, and high affinity immunoglobulin epsilon receptor activation. Studies in mouse suggest that this gene is involved in antifungal host defense and that its inhibition leads to increased fungal killing. Manipulation of this gene may be beneficial in implementing immunotherapies for a variety of conditions, including cancer, autoimmune diseases, allergies, and infections.

#### For Research Use Only

Thank you for your recent purchase.  
 If you would like to learn more about antibodies, please visit [www.elabscience.com](http://www.elabscience.com).

**Focus on your research  
 Service for life science**

Applications:WB-Western Blot IHC-Immunohistochemistry IF-Immunofluorescence IP-Immunoprecipitation FC-Flow cytometry ChIP-Chromatin Immunoprecipitation Reactivity: H-Human R-Rat M-Mouse Mk-Monkey Dg-Dog Ch-Chicken Hm-Hamster Rb-Rabbit Sh-Sheep Pg-Pig Z-Zebrafish X-Xenopus C-Cow.