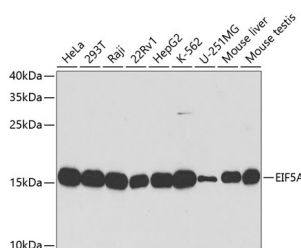


EIF5A Polyclonal Antibody

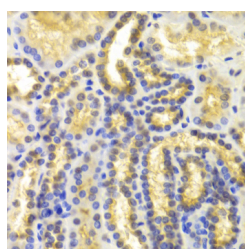
Catalog No.	E-AB-60556	Reactivity	H,M
Storage	Store at -20°C. Avoid freeze / thaw cycles.	Host	Rabbit
Applications	WB,IHC,IF	Isotype	IgG

Note: Centrifuge before opening to ensure complete recovery of vial contents.

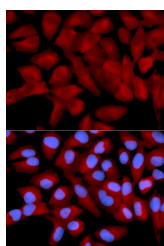
Images



Western blot analysis of extracts of various cell lines using EIF5A Polyclonal Antibody at dilution of 1:1000.



Immunohistochemistry of paraffin-embedded Human kidney using EIF5A Polyclonal Antibody at dilution of 1:100 (40x lens).



Immunofluorescence analysis of U2OS cells using EIF5A Polyclonal Antibody

Immunogen Information

Immunogen	Recombinant fusion protein of human EIF5A (NP_001137234.1).
GeneID	1984
Swissprot	P63241
Synonyms	EIF5A,EIF-5A,EIF5A1,eIF5AI

Product Information

Calculated MW	16kDa/20kDa
Observed MW	17kDa
Buffer	PBS with 0.02% sodium azide, 50% glycerol, pH7.3.
Purify	Affinity purification
Dilution	WB 1:500-1:2000 IHC 1:50-1:200 IF 1:50-1:200

Background

EIF5A (Eukaryotic Translation Initiation Factor 5A) is a Protein Coding gene. Diseases associated with EIF5A include Human Immunodeficiency Virus Type 1 and Retinitis Pigmentosa 14. Among its related pathways are eIF5A regulation in response to inhibition of the nuclear export system and Metabolism of proteins. Gene Ontology (GO) annotations related to this gene include protein N-terminus binding. An important paralog of this gene is EIF5AL1.

For Research Use Only

Thank you for your recent purchase.
 If you would like to learn more about antibodies, please visit www.elabscience.com.

**Focus on your research
 Service for life science**

Applications:WB-Western Blot IHC-Immunohistochemistry IF-Immunofluorescence IP-Immunoprecipitation FC-Flow cytometry ChIP-Chromatin Immunoprecipitation Reactivity: H-Human R-Rat M-Mouse Mk-Monkey Dg-Dog Ch-Chicken Hm-Hamster Rb-Rabbit Sh-Sheep Pg-Pig Z-Zebrafish X-Xenopus C-Cow.