

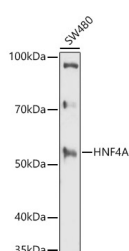
## HNF4A Polyclonal Antibody

**Catalog No.** E-AB-60594  
**Storage** Store at -20°C. Avoid freeze / thaw cycles.  
**Applications** WB

**Reactivity** H  
**Host** Rabbit  
**Isotype** IgG

**Note:** Centrifuge before opening to ensure complete recovery of vial contents.

### Images



Western blot analysis of extracts of SW480 cells using HNF4A Polyclonal Antibody at 1:1000 dilution.

### Immunogen Information

**Immunogen** A synthetic peptide of human HNF4A  
**GeneID** 3172  
**Swissprot** P41235  
**Synonyms** HNF4A,FRTS4,HNF4,HNF4a7,HNF4a8,HNF4a9,HNF4alpha,MODY,MODY1,NR2A1,NR2A21,TCF,TCF14

### Product Information

**Calculated MW** 43-56kDa  
**Observed MW** 52KDa  
**Buffer** PBS with 0.05% proclin300,50% glycerol,pH7.3.  
**Purify** Affinity purification  
**Dilution** WB 1:500-1:2000

### Background

The protein encoded by this gene is a nuclear transcription factor which binds DNA as a homodimer. The encoded protein controls the expression of several genes, including hepatocyte nuclear factor 1 alpha, a transcription factor which regulates the expression of several hepatic genes. This gene may play a role in development of the liver, kidney, and intestines. Mutations in this gene have been associated with monogenic autosomal dominant non-insulin-dependent diabetes mellitus type I. Alternative splicing of this gene results in multiple transcript variants encoding several different isoforms.

### For Research Use Only

Thank you for your recent purchase.  
If you would like to learn more about antibodies, please visit [www.elabscience.com](http://www.elabscience.com).

### Focus on your research Service for life science

Applications:WB-Western Blot IHC-Immunohistochemistry IF-Immunofluorescence IP-Immunoprecipitation FC-Flow cytometry ChIP-Chromatin Immunoprecipitation Reactivity: H-Human R-Rat M-Mouse Mk-Monkey Dg-Dog Ch-Chicken Hm-Hamster Rb-Rabbit Sh-Sheep Pg-Pig Z-Zebrafish X-Xenopus C-Cow.