

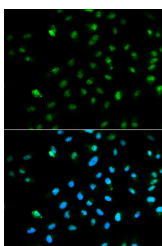
## POLR2A Polyclonal Antibody

**Catalog No.** E-AB-60611  
**Storage** Store at -20°C. Avoid freeze / thaw cycles.  
**Applications** IF

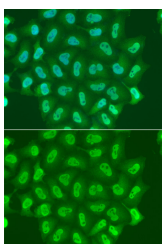
**Reactivity** H,M,R  
**Host** Rabbit  
**Isotype** IgG

**Note:** Centrifuge before opening to ensure complete recovery of vial contents.

### Images



Immunofluorescence analysis of HepG2 cells using POLR2A Polyclonal Antibody



Immunofluorescence analysis of A549 cells using POLR2A Polyclonal Antibody

### Immunogen Information

**Immunogen** Recombinant fusion protein of human POLR2A (NP\_000928.1).  
**GeneID** 5430  
**Swissprot** P24928  
**Synonyms** POLR2A,POLR2,POLRA,RPB1,RPBh1,RPO2,RPO L2,RpIILS,hRPB220,hsRPB1,Pol II

### Product Information

**Buffer** PBS with 0.02% sodium azide, 50% glycerol, pH7.3.  
**Purify** Affinity purification  
**Dilution** IF 1:50-1:200

### Background

This gene encodes the largest subunit of RNA polymerase II, the polymerase responsible for synthesizing messenger RNA in eukaryotes. The product of this gene contains a carboxy terminal domain composed of heptapeptide repeats that are essential for polymerase activity. These repeats contain serine and threonine residues that are phosphorylated in actively transcribing RNA polymerase. In addition, this subunit, in combination with several other polymerase subunits, forms the DNA binding domain of the polymerase, a groove in which the DNA template is transcribed into RNA.

### For Research Use Only

Thank you for your recent purchase.  
If you would like to learn more about antibodies, please visit [www.elabscience.com](http://www.elabscience.com).

### Focus on your research Service for life science

Applications: WB-Western Blot IHC-Immunohistochemistry IF-Immunofluorescence IP-Immunoprecipitation FC-Flow cytometry ChIP-Chromatin Immunoprecipitation Reactivity: H-Human R-Rat M-Mouse Mk-Monkey Dg-Dog Ch-Chicken Hm-Hamster Rb-Rabbit Sh-Sheep Pg-Pig Z-Zebrafish X-Xenopus C-Cow.