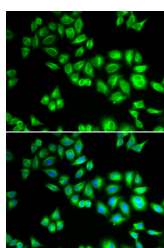


## CUL1 Polyclonal Antibody

<b>Catalog No.</b>	E-AB-60629	<b>Reactivity</b>	H,M,R
<b>Storage</b>	Store at -20°C. Avoid freeze / thaw cycles.	<b>Host</b>	Rabbit
<b>Applications</b>	IF	<b>Isotype</b>	IgG

**Note:** Centrifuge before opening to ensure complete recovery of vial contents.

### Images



Immunofluorescence analysis of HeLa cells using CUL1 Polyclonal Antibody

### Immunogen Information

<b>Immunogen</b>	Recombinant fusion protein of human CUL1 (NP_003583.2).
<b>GeneID</b>	8454
<b>Swissprot</b>	Q13616
<b>Synonyms</b>	Cullin 1,CUL1,cullin-1,MGC149834,MGC149835

### Product Information

<b>Buffer</b>	PBS with 0.02% sodium azide, 50% glycerol, pH7.3.
<b>Purify</b>	Affinity purification
<b>Dilution</b>	IF 1:10-1:100

### Background

CUL1 (Cullin 1) is a Protein Coding gene. Diseases associated with CUL1 include Vaccinia and Weaver Syndrome. Among its related pathways are Regulation of Wnt-mediated beta catenin signaling and target gene transcription and FBXW7 Mutants and NOTCH1 in Cancer. Gene Ontology (GO) annotations related to this gene include ubiquitin protein ligase binding. An important paralog of this gene is CUL2.

#### For Research Use Only

Thank you for your recent purchase.

If you would like to learn more about antibodies, please visit [www.elabscience.com](http://www.elabscience.com).

**Focus on your research  
 Service for life science**

Applications:WB-Western Blot IHC-Immunohistochemistry IF-Immunofluorescence IP-Immunoprecipitation FC-Flow cytometry ChIP-Chromatin Immunoprecipitation Reactivity: H-Human R-Rat M-Mouse Mk-Monkey Dg-Dog Ch-Chicken Hm-Hamster Rb-Rabbit Sh-Sheep Pg-Pig Z-Zebrafish X-Xenopus C-Cow.