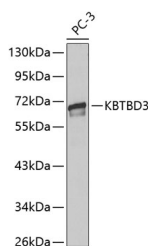


KBTBD3 Polyclonal Antibody

Catalog No.	E-AB-60643	Reactivity	H
Storage	Store at -20°C. Avoid freeze / thaw cycles.	Host	Rabbit
Applications	WB	Isotype	IgG

Note: Centrifuge before opening to ensure complete recovery of vial contents.

Images



Western blot analysis of extracts of PC-3 cells using KBTBD3 Polyclonal Antibody.

Immunogen Information

Immunogen	Recombinant fusion protein of mouse KBTBD3 (NP_081238.2).
GeneID	69149
Swissprot	Q8BHI4
Synonyms	KBTBD3,BKLHD3

Product Information

Calculated MW	69kDa
Observed MW	69kDa
Buffer	PBS with 0.02% sodium azide, 50% glycerol, pH7.3.
Purify	Affinity purification
Dilution	WB 1:500-1:2000

Background

KBTBD3 (Kelch Repeat And BTB Domain Containing 3) is a Protein Coding gene. Diseases associated with KBTBD3 include Schizotypal Personality Disorder. An important paralog of this gene is KLHL2.

For Research Use Only

Thank you for your recent purchase.

If you would like to learn more about antibodies, please visit www.elabscience.com.

**Focus on your research
Service for life science**

Applications: WB-Western Blot IHC-Immunohistochemistry IF-Immunofluorescence IP-Immunoprecipitation FC-Flow cytometry ChIP-Chromatin Immunoprecipitation Reactivity: H-Human R-Rat M-Mouse Mk-Monkey Dg-Dog Ch-Chicken Hm-Hamster Rb-Rabbit Sh-Sheep Pg-Pig Z-Zebrafish X-Xenopus C-Cow.