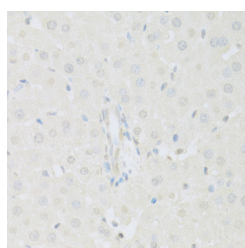


## KAT2A Polyclonal Antibody

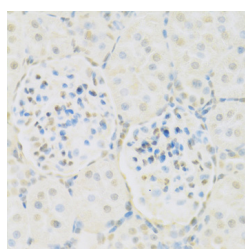
<b>Catalog No.</b>	E-AB-65395	<b>Reactivity</b>	H,M,R
<b>Storage</b>	Store at -20°C. Avoid freeze / thaw cycles.	<b>Host</b>	Rabbit
<b>Applications</b>	IHC,IF	<b>Isotype</b>	IgG

**Note:** Centrifuge before opening to ensure complete recovery of vial contents.

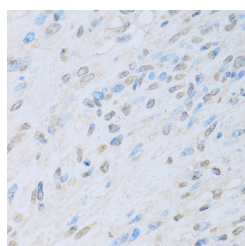
### Images



Immunohistochemistry of paraffin-embedded Rat liver using KAT2A Polyclonal Antibody at dilution of 1:100 (40x lens).



Immunohistochemistry of paraffin-embedded Rat kidney using KAT2A Polyclonal Antibody at dilution of 1:100 (40x lens).



Immunohistochemistry of paraffin-embedded Human liver cancer using KAT2A Polyclonal Antibody at dilution of 1:100 (40x lens).

### Immunogen Information

<b>Immunogen</b>	Recombinant fusion protein of human KAT2A (NP_066564.2).
<b>GeneID</b>	2648
<b>Swissprot</b>	Q92830
<b>Synonyms</b>	KAT2A,GCN5,GCN5L2,PCAF-b,hGCN5

### Product Information

<b>Buffer</b>	PBS with 0.02% sodium azide, 50% glycerol, pH7.3.
<b>Purify</b>	Affinity purification
<b>Dilution</b>	IHC 1:50-1:200 IF 1:50-1:200

### Background

KAT2A (Lysine Acetyltransferase 2A) is a Protein Coding gene. Diseases associated with KAT2A include Spinocerebellar Ataxia 7 and Chromosome 16P13.3 Deletion Syndrome, Proximal. Among its related pathways are Chromatin organization and E2F transcription factor network. Gene Ontology (GO) annotations related to this gene include chromatin binding and transcription coactivator activity. An important paralog of this gene is KAT2B.

#### For Research Use Only

Thank you for your recent purchase.  
 If you would like to learn more about antibodies, please visit [www.elabscience.com](http://www.elabscience.com).

**Focus on your research  
 Service for life science**

Applications:WB-Western Blot IHC-Immunohistochemistry IF-Immunofluorescence IP-Immunoprecipitation FC-Flow cytometry ChIP-Chromatin Immunoprecipitation Reactivity: H-Human R-Rat M-Mouse Mk-Monkey Dg-Dog Ch-Chicken Hm-Hamster Rb-Rabbit Sh-Sheep Pg-Pig Z-Zebrafish X-Xenopus C-Cow.