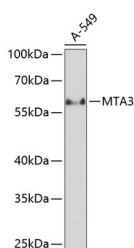


MTA3 Polyclonal Antibody

Catalog No.	E-AB-63721	Reactivity	H,M
Storage	Store at -20°C. Avoid freeze / thaw cycles.	Host	Rabbit
Applications	WB	Isotype	IgG

Note: Centrifuge before opening to ensure complete recovery of vial contents.

Images



Western blot analysis of extracts of A-549 cells using MTA3 Polyclonal Antibody at dilution of 1:1000.

Immunogen Information

Immunogen	Recombinant fusion protein of human MTA3 (NP_065795.1).
GeneID	57504
Swissprot	Q9BTC8
Synonyms	MTA3

Product Information

Calculated MW	58kDa/67kDa
Observed MW	67kDa
Buffer	PBS with 0.02% sodium azide, 50% glycerol, pH7.3.
Purify	Affinity purification
Dilution	WB 1:500-1:2000

Background

MTA3 (Metastasis Associated 1 Family Member 3) is a Protein Coding gene. Diseases associated with MTA3 include Gastroesophageal Junction Adenocarcinoma and Vertebral, Cardiac, Renal, And Limb Defects Syndrome 1. Among its related pathways are Preimplantation Embryo and Chromatin organization. Gene Ontology (GO) annotations related to this gene include DNA-binding transcription factor activity and chromatin binding. An important paralog of this gene is MTA1.

For Research Use Only

Thank you for your recent purchase.
 If you would like to learn more about antibodies, please visit www.elabscience.com.

**Focus on your research
 Service for life science**

Applications: WB-Western Blot IHC-Immunohistochemistry IF-Immunofluorescence IP-Immunoprecipitation FC-Flow cytometry ChIP-Chromatin Immunoprecipitation Reactivity: H-Human R-Rat M-Mouse Mk-Monkey Dg-Dog Ch-Chicken Hm-Hamster Rb-Rabbit Sh-Sheep Pg-Pig Z-Zebrafish X-Xenopus C-Cow.