

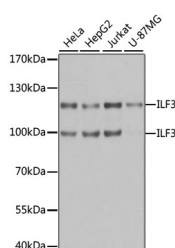
ILF3 Polyclonal Antibody

Catalog No. E-AB-60693
Storage Store at -20°C. Avoid freeze / thaw cycles.
Applications WB,IF

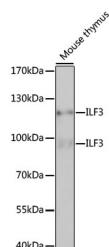
Reactivity H,M,R
Host Rabbit
Isotype IgG

Note: Centrifuge before opening to ensure complete recovery of vial contents.

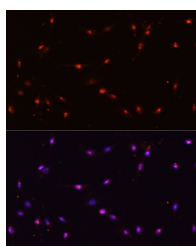
Images



Western blot analysis of extracts of various cell lines using ILF3 Polyclonal Antibody at dilution of 1:1000.



Western blot analysis of extracts of Mouse thymus using ILF3 Polyclonal Antibody at dilution of 1:1000.



Immunofluorescence analysis of C6 cells using ILF3 Polyclonal Antibody at dilution of 1:100. Blue: DAPI for nuclear staining.

Immunogen Information

Immunogen Recombinant fusion protein of human ILF3 (NP_036350.2).
GeneID 3609
Swissprot Q12906
Synonyms ILF3,CBTF,DRBF,DRBP76,MMP4,MPHOSPH4,MP P4,NF-AT-90

Product Information

Calculated MW 74kDa/75kDa/76kDa/82kDa/95kDa
Observed MW 95kDa/120kDa
Buffer PBS with 0.02% sodium azide, 50% glycerol, pH7.3.
Purify Affinity purification
Dilution WB 1:500-1:2000 IF 1:50-1:200

Background

This gene encodes a double-stranded RNA (dsRNA) binding protein that complexes with other proteins, dsRNAs, small noncoding RNAs, and mRNAs to regulate gene expression and stabilize mRNAs. This protein (NF90, ILF3) forms a heterodimer with a 45 kDa transcription factor (NF45, ILF2) required for T-cell expression of interleukin 2. This complex has been shown to affect the redistribution of nuclear mRNA to the cytoplasm. Knockdown of NF45 or NF90 protein retards cell growth, possibly by inhibition of mRNA stabilization. In contrast, an isoform (NF110) of this gene that is predominantly restricted to the nucleus has only minor effects on cell growth when its levels are reduced. Alternative splicing results in multiple transcript variants encoding distinct isoforms.

For Research Use Only

Thank you for your recent purchase.
If you would like to learn more about antibodies, please visit www.elabscience.com.

Focus on your research Service for life science

Applications: WB-Western Blot IHC-Immunohistochemistry IF-Immunofluorescence IP-Immunoprecipitation FC-Flow cytometry ChIP-Chromatin Immunoprecipitation Reactivity: H-Human R-Rat M-Mouse Mk-Monkey Dg-Dog Ch-Chicken Hm-Hamster Rb-Rabbit Sh-Sheep Pg-Pig Z-Zebrafish X-Xenopus C-Cow.