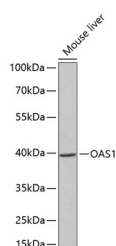


## OAS1 Polyclonal Antibody

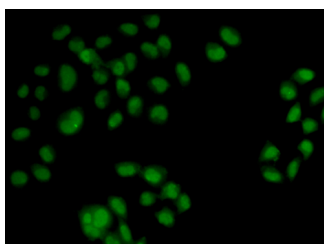
<b>Catalog No.</b>	E-AB-61791	<b>Reactivity</b>	H,M
<b>Storage</b>	Store at -20°C. Avoid freeze / thaw cycles.	<b>Host</b>	Rabbit
<b>Applications</b>	WB,IF	<b>Isotype</b>	IgG

**Note:** Centrifuge before opening to ensure complete recovery of vial contents.

### Images



Western blot analysis of extracts of Mouse liver using OAS1 Polyclonal Antibody at dilution of 1:1000.



Immunofluorescence analysis of HeLa cells using OAS1 Polyclonal Antibody

### Immunogen Information

<b>Immunogen</b>	Recombinant fusion protein of human OAS1 (NP_002525.2).
<b>GeneID</b>	4938
<b>Swissprot</b>	P00973
<b>Synonyms</b>	OAS1,E18/E16,IFI-4,OIAS,OIASI

### Product Information

<b>Calculated MW</b>	41kDa/43kDa/46kDa/47kDa
<b>Observed MW</b>	40kDa
<b>Buffer</b>	PBS with 0.02% sodium azide, 50% glycerol, pH7.3.
<b>Purify</b>	Affinity purification
<b>Dilution</b>	WB 1:500-1:2000 IF 1:50-1:100

### Background

This gene is induced by interferons and encodes a protein that synthesizes 2',5'-oligoadenylates (2-5As). This protein activates latent RNase L, which results in viral RNA degradation and the inhibition of viral replication. Alternative splicing results in multiple transcript variants with different enzymatic activities. Polymorphisms in this gene have been associated with susceptibility to viral infection and diabetes mellitus, type 1. A disease-associated allele in a splice acceptor site influences the production of the p46 splice isoform. This gene is located in a cluster of related genes on chromosome 12.

#### For Research Use Only

Thank you for your recent purchase.  
 If you would like to learn more about antibodies, please visit [www.elabscience.com](http://www.elabscience.com).

**Focus on your research  
 Service for life science**

Applications:WB-Western Blot IHC-Immunohistochemistry IF-Immunofluorescence IP-Immunoprecipitation FC-Flow cytometry ChIP-Chromatin Immunoprecipitation Reactivity: H-Human R-Rat M-Mouse Mk-Monkey Dg-Dog Ch-Chicken Hm-Hamster Rb-Rabbit Sh-Sheep Pg-Pig Z-Zebrafish X-Xenopus C-Cow.