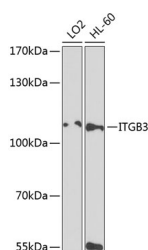


ITGB3 Polyclonal Antibody

Catalog No.	E-AB-60718	Reactivity	H,M,R
Storage	Store at -20°C. Avoid freeze / thaw cycles.	Host	Rabbit
Applications	WB	Isotype	IgG

Note: Centrifuge before opening to ensure complete recovery of vial contents.

Images



Western blot analysis of extracts of various cell lines using ITGB3 Polyclonal Antibody at dilution of 1:1000.

Immunogen Information

Immunogen	Recombinant fusion protein of human ITGB3 (NP_000203.2).
GeneID	3690
Swissprot	P05106
Synonyms	BDPLT16,BDPLT2,CD61,GP3A,GPIIIa,GT,Integrin beta 3,ITGB3

Product Information

Calculated MW	86kDa/87kDa
Observed MW	105kDa
Buffer	PBS with 0.02% sodium azide, 50% glycerol, pH7.3.
Purify	Affinity purification
Dilution	WB 1:500-1:2000

Background

The ITGB3 protein product is the integrin beta chain beta 3. Integrins are integral cell-surface proteins composed of an alpha chain and a beta chain. A given chain may combine with multiple partners resulting in different integrins. Integrin beta 3 is found along with the alpha IIb chain in platelets. Integrins are known to participate in cell adhesion as well as cell-surface mediated signalling.

For Research Use Only

Thank you for your recent purchase.
 If you would like to learn more about antibodies, please visit www.elabscience.com.

**Focus on your research
 Service for life science**

Applications:WB-Western Blot IHC-Immunohistochemistry IF-Immunofluorescence IP-Immunoprecipitation FC-Flow cytometry ChIP-Chromatin Immunoprecipitation Reactivity: H-Human R-Rat M-Mouse Mk-Monkey Dg-Dog Ch-Chicken Hm-Hamster Rb-Rabbit Sh-Sheep Pg-Pig Z-Zebrafish X-Xenopus C-Cow.