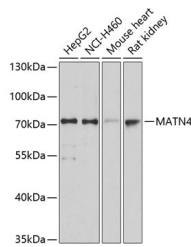


MATN4 Polyclonal Antibody

Catalog No.	E-AB-63727	Reactivity	H,M,R
Storage	Store at -20°C. Avoid freeze / thaw cycles.	Host	Rabbit
Applications	WB	Isotype	IgG

Note: Centrifuge before opening to ensure complete recovery of vial contents.

Images



Western blot analysis of extracts of various cell lines using MATN4 Polyclonal Antibody at dilution of 1:3000.

Immunogen Information

Immunogen	Recombinant fusion protein of human MATN4 (NP_085080.1).
GeneID	8785
Swissprot	O95460
Synonyms	MATN4

Product Information

Calculated MW	47kDa/59kDa/64kDa/68kDa
Observed MW	73kDa
Buffer	PBS with 0.02% sodium azide, 50% glycerol, pH7.3.
Purify	Affinity purification
Dilution	WB 1:500-1:2000

Background

This gene encodes a member of von Willebrand factor A domain-containing protein family. The proteins of this family are thought to be involved in the formation of filamentous networks in the extracellular matrices of various tissues. This family member is thought to play a role in reorganizing and regenerating the corneal matrix in granular and lattice type I dystrophies. It may also be involved in wound healing in the dentin-pulp complex. Alternative splicing results in multiple transcript variants.

For Research Use Only

Thank you for your recent purchase.
 If you would like to learn more about antibodies, please visit www.elabscience.com.

**Focus on your research
 Service for life science**

Applications: WB-Western Blot IHC-Immunohistochemistry IF-Immunofluorescence IP-Immunoprecipitation FC-Flow cytometry ChIP-Chromatin Immunoprecipitation Reactivity: H-Human R-Rat M-Mouse Mk-Monkey Dg-Dog Ch-Chicken Hm-Hamster Rb-Rabbit Sh-Sheep Pg-Pig Z-Zebrafish X-Xenopus C-Cow.