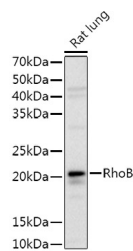


## RHOB Polyclonal Antibody

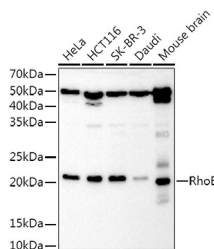
<b>Catalog No.</b>	E-AB-63240	<b>Reactivity</b>	H,M,R
<b>Storage</b>	Store at -20°C. Avoid freeze / thaw cycles.	<b>Host</b>	Rabbit
<b>Applications</b>	WB	<b>Isotype</b>	IgG

**Note:** Centrifuge before opening to ensure complete recovery of vial contents.

### Images



Western blot analysis of extracts of Rat lung using RhoB Polyclonal Antibody Polyclonal Antibody at 1:1000 dilution.



Western blot analysis of extracts of various cell lines using RhoB Polyclonal Antibody at 1:1000 dilution.

### Immunogen Information

<b>Immunogen</b>	A synthetic peptide of human RHOB
<b>GeneID</b>	388
<b>Swissprot</b>	P62745
<b>Synonyms</b>	RHOB, ARH6, ARHB, MST081, MSTP081, RHOH6

### Product Information

<b>Calculated MW</b>	22kDa
<b>Observed MW</b>	21kDa
<b>Buffer</b>	PBS with 0.05% proclin300, 50% glycerol, pH7.3.
<b>Purify</b>	Affinity purification
<b>Dilution</b>	WB 1:500-1:2000

### Background

RHOB (ras homolog family member B) is a protein-coding gene. GO annotations related to this gene include GDP binding and GTP binding. An important paralog of this gene is RND1.

#### For Research Use Only

Thank you for your recent purchase.  
 If you would like to learn more about antibodies, please visit [www.elabscience.com](http://www.elabscience.com).

**Focus on your research  
 Service for life science**

Applications: WB-Western Blot IHC-Immunohistochemistry IF-Immunofluorescence IP-Immunoprecipitation FC-Flow cytometry ChIP-Chromatin Immunoprecipitation Reactivity: H-Human R-Rat M-Mouse Mk-Monkey Dg-Dog Ch-Chicken Hm-Hamster Rb-Rabbit Sh-Sheep Pg-Pig Z-Zebrafish X-Xenopus C-Cow.