

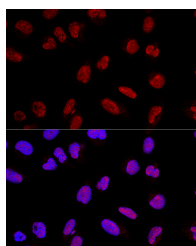
AKAP8 Polyclonal Antibody

Catalog No. E-AB-62339
Storage Store at -20°C. Avoid freeze / thaw cycles.
Applications IF

Reactivity H,M
Host Rabbit
Isotype IgG

Note: Centrifuge before opening to ensure complete recovery of vial contents.

Images



Confocal immunofluorescence analysis of U2OS cells using AKAP8 Polyclonal Antibody at dilution of 1:200. Blue: DAPI for nuclear staining.

Immunogen Information

Immunogen Recombinant fusion protein of human AKAP8 (NP_005849.1).
GeneID 10270
Swissprot O43823
Synonyms AKAP8,AKAP 95,AKAP-8,AKAP-95,AKAP95

Product Information

Buffer PBS with 0.02% sodium azide, 50% glycerol, pH7.3.
Purify Affinity purification
Dilution IF 1:50-1:200

Background

This gene encodes a member of the A-kinase anchor protein family. A-kinase anchor proteins are scaffold proteins that contain a binding domain for the RI/RII subunit of protein kinase A (PKA) and recruit PKA and other signaling molecules to specific subcellular locations. This gene encodes a nuclear A-kinase anchor protein that binds to the RII alpha subunit of PKA and may play a role in chromosome condensation during mitosis by targeting PKA and the condensin complex to chromatin. A pseudogene of this gene is located on the short arm of chromosome 9.

For Research Use Only

Thank you for your recent purchase.
If you would like to learn more about antibodies, please visit www.elabscience.com.

Focus on your research Service for life science

Applications:WB-Western Blot IHC-Immunohistochemistry IF-Immunofluorescence IP-Immunoprecipitation FC-Flow cytometry ChIP-Chromatin Immunoprecipitation Reactivity: H-Human R-Rat M-Mouse Mk-Monkey Dg-Dog Ch-Chicken Hm-Hamster Rb-Rabbit Sh-Sheep Pg-Pig Z-Zebrafish X-Xenopus C-Cow.