

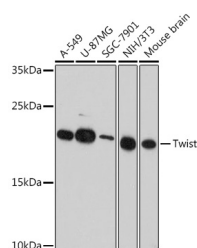
Twist Polyclonal Antibody

Catalog No. E-AB-65429
Storage Store at -20°C. Avoid freeze / thaw cycles.
Applications WB,IHC

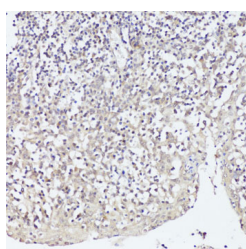
Reactivity H,M,R
Host Rabbit
Isotype IgG

Note: Centrifuge before opening to ensure complete recovery of vial contents.

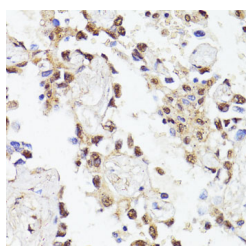
Images



Western blot analysis of extracts of various cell lines using Twist Polyclonal Antibody at dilution of 1:1000.



Immunohistochemistry of paraffin-embedded Human tonsil using Twist Polyclonal Antibody at dilution of 1:100 (40x lens).



Immunohistochemistry of paraffin-embedded Human lung cancer using Twist Polyclonal Antibody at dilution of 1:100 (40x lens).

Immunogen Information

Immunogen A synthetic peptide of human Twist (NP_000465.1).
GeneID 7291
Swissprot Q15672
Synonyms TWIST1,ACS3,BPES2,BPES3,CRS,CRS1,CSO,SCS, TWIST,bHLHa38

Product Information

Calculated MW 21kDa
Observed MW 21kDa
Buffer PBS with 0.02% sodium azide, 50% glycerol, pH7.3.
Purify Affinity purification
Dilution WB 1:500-1:2000 IHC 1:50-1:200

Background

Basic helix-loop-helix (bHLH) transcription factors have been implicated in cell lineage determination and differentiation. The protein encoded by this gene is a bHLH transcription factor and shares similarity with another bHLH transcription factor, Dermo1. The strongest expression of this mRNA is in placental tissue; in adults, mesodermally derived tissues express this mRNA preferentially. Mutations in this gene have been found in patients with Saethre-Chotzen syndrome.

For Research Use Only

Thank you for your recent purchase.
If you would like to learn more about antibodies, please visit www.elabscience.com.

Focus on your research Service for life science

Applications:WB-Western Blot IHC-Immunohistochemistry IF-Immunofluorescence IP-Immunoprecipitation FC-Flow cytometry ChIP-Chromatin Immunoprecipitation Reactivity: H-Human R-Rat M-Mouse Mk-Monkey Dg-Dog Ch-Chicken Hm-Hamster Rb-Rabbit Sh-Sheep Pg-Pig Z-Zebrafish X-Xenopus C-Cow.