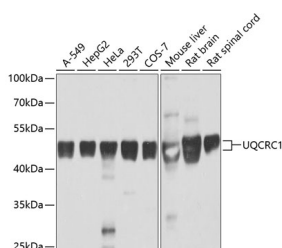


## UQCRC1 Polyclonal Antibody

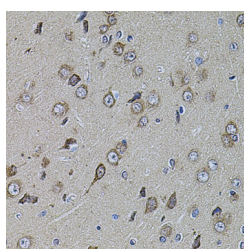
<b>Catalog No.</b>	E-AB-62257	<b>Reactivity</b>	H,M,R
<b>Storage</b>	Store at -20°C. Avoid freeze / thaw cycles.	<b>Host</b>	Rabbit
<b>Applications</b>	WB,IHC	<b>Isotype</b>	IgG

**Note:** Centrifuge before opening to ensure complete recovery of vial contents.

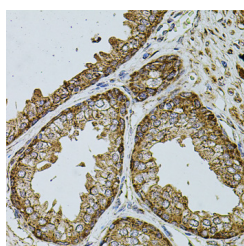
### Images



Western blot analysis of extracts of various cell lines using UQCRC1 Polyclonal Antibody at dilution of 1:1000.



Immunohistochemistry of paraffin-embedded Rat brain using UQCRC1 Polyclonal Antibody at dilution of 1:100 (40x lens).



Immunohistochemistry of paraffin-embedded Human prostate using UQCRC1 Polyclonal Antibody at dilution of 1:100 (40x lens).

### Immunogen Information

<b>Immunogen</b>	Recombinant fusion protein of human UQCRC1 (NP_003356.2).
<b>GeneID</b>	7384
<b>Swissprot</b>	P31930
<b>Synonyms</b>	UQCRC1,D3S3191,QCR1,UQCR1

### Product Information

<b>Calculated MW</b>	52kDa
<b>Observed MW</b>	53kDa
<b>Buffer</b>	PBS with 0.02% sodium azide, 50% glycerol, pH7.3.
<b>Purify</b>	Affinity purification
<b>Dilution</b>	WB 1:500-1:2000 IHC 1:50-1:200

### Background

UQCRC1 (Ubiquinol-Cytochrome C Reductase Core Protein 1) is a Protein Coding gene. Diseases associated with UQCRC1 include Leukodystrophy, Hypomyelinating, 4 and Alzheimer Disease. Among its related pathways are Respiratory electron transport, ATP synthesis by chemiosmotic coupling, and heat production by uncoupling proteins. and Cardiac muscle contraction. Gene Ontology (GO) annotations related to this gene include ubiquitin protein ligase binding and ubiquinol-cytochrome-c reductase activity. An important paralog of this gene is PMPCB.

#### For Research Use Only

Thank you for your recent purchase.  
 If you would like to learn more about antibodies, please visit [www.elabscience.com](http://www.elabscience.com).

**Focus on your research**  
**Service for life science**

Applications:WB-Western Blot IHC-Immunohistochemistry IF-Immunofluorescence IP-Immunoprecipitation FC-Flow cytometry ChIP-Chromatin Immunoprecipitation Reactivity: H-Human R-Rat M-Mouse Mk-Monkey Dg-Dog Ch-Chicken Hm-Hamster Rb-Rabbit Sh-Sheep Pg-Pig Z-Zebrafish X-Xenopus C-Cow.