

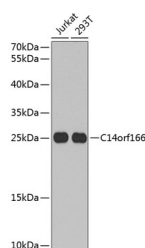
## C14orf166 Polyclonal Antibody

**Catalog No.** E-AB-62451  
**Storage** Store at -20°C. Avoid freeze / thaw cycles.  
**Applications** WB

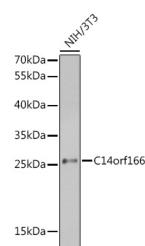
**Reactivity** H,M  
**Host** Rabbit  
**Isotype** IgG

**Note:** Centrifuge before opening to ensure complete recovery of vial contents.

### Images



Western blot analysis of extracts of various cell lines using C14orf166 Polyclonal Antibody at 1:1000 dilution.



Western blot analysis of extracts of NIH/3T3 cells using C14orf166 Polyclonal Antibody at 1:1000 dilution.

### Immunogen Information

**Immunogen** Recombinant fusion protein of human C14orf166  
**GeneID** 51637  
**Swissprot** Q9Y224  
**Synonyms** C14orf166,CGI-99,CGI99,CLE,CLE7,LCRP369,RL LM1,hCLE1

### Product Information

**Calculated MW** 28kDa  
**Observed MW** 25kDa/28kDa  
**Buffer** PBS with 0.02% sodium azide,50% glycerol,pH7.3.  
**Purify** Affinity purification  
**Dilution** WB 1:500-1:2000

### Background

RNA-binding protein involved in modulation of mRNA transcription by Polymerase II. Component of the tRNA-splicing ligase complex and is required for tRNA ligation. May be required for RNA transport.

### For Research Use Only

Thank you for your recent purchase.  
If you would like to learn more about antibodies, please visit [www.elabscience.com](http://www.elabscience.com).

### Focus on your research Service for life science

Applications:WB-Western Blot IHC-Immunohistochemistry IF-Immunofluorescence IP-Immunoprecipitation FC-Flow cytometry ChIP-Chromatin Immunoprecipitation Reactivity: H-Human R-Rat M-Mouse Mk-Monkey Dg-Dog Ch-Chicken Hm-Hamster Rb-Rabbit Sh-Sheep Pg-Pig Z-Zebrafish X-Xenopus C-Cow.