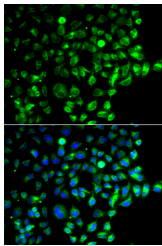


RAB31 Polyclonal Antibody

Catalog No.	E-AB-65448	Reactivity	H,M,R
Storage	Store at -20°C. Avoid freeze / thaw cycles.	Host	Rabbit
Applications	IF	Isotype	IgG

Note: Centrifuge before opening to ensure complete recovery of vial contents.

Images



Immunofluorescence analysis of A549 cells using RAB31 Polyclonal Antibody

Immunogen Information

Immunogen	Recombinant fusion protein of human RAB31 (NP_006859.2).
GeneID	11031
Swissprot	Q13636
Synonyms	RAB31,Rab22B

Product Information

Buffer	PBS with 0.02% sodium azide, 50% glycerol, pH7.3.
Purify	Affinity purification
Dilution	IF 1:50-1:200

Background

RAB31 (RAB31, Member RAS Oncogene Family) is a Protein Coding gene. Diseases associated with RAB31 include Estrogen-Receptor Positive Breast Cancer and Choroid Cancer. Among its related pathways are RAB GEFs exchange GTP for GDP on RABs and Metabolism of proteins. Gene Ontology (GO) annotations related to this gene include GTP binding and GDP binding. An important paralog of this gene is RAB22A.

For Research Use Only

Thank you for your recent purchase.
If you would like to learn more about antibodies, please visit www.elabscience.com.

Focus on your research Service for life science

Applications: WB-Western Blot IHC-Immunohistochemistry IF-Immunofluorescence IP-Immunoprecipitation FC-Flow cytometry ChIP-Chromatin Immunoprecipitation Reactivity: H-Human R-Rat M-Mouse Mk-Monkey Dg-Dog Ch-Chicken Hm-Hamster Rb-Rabbit Sh-Sheep Pg-Pig Z-Zebrafish X-Xenopus C-Cow.