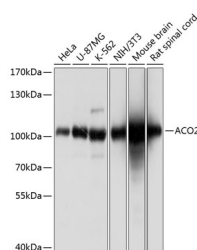


## ACO2 Polyclonal Antibody

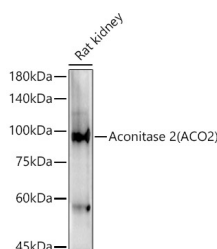
<b>Catalog No.</b>	E-AB-63749	<b>Reactivity</b>	H,M,R
<b>Storage</b>	Store at -20°C. Avoid freeze / thaw cycles.	<b>Host</b>	Rabbit
<b>Applications</b>	WB,IHC	<b>Isotype</b>	IgG

**Note:** Centrifuge before opening to ensure complete recovery of vial contents.

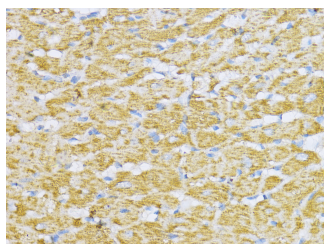
### Images



Western blot analysis of extracts of various cell lines using Aconitase 2 (ACO2) Polyclonal Antibody at 1:2000 dilution.



Western blot analysis of extracts of Rat kidney using Aconitase 2 (ACO2) Polyclonal Antibody at 1:2000 dilution.



Immunohistochemistry of paraffin-embedded Rat heart using Aconitase 2 (ACO2) Polyclonal antibody at dilution of 1:100 (40x lens). Perform microwave antigen retrieval with 10 mM PBS buffer pH 7.2 before commencing with IHC staining protocol.

### For Research Use Only

Thank you for your recent purchase.  
 If you would like to learn more about antibodies, please visit [www.elabscience.com](http://www.elabscience.com).

### Immunogen Information

<b>Immunogen</b>	Recombinant fusion protein of human ACO2
<b>GeneID</b>	50
<b>Swissprot</b>	Q99798
<b>Synonyms</b>	ACO2,ACONM,HEL-S-284,ICRD,OCA8,OPA9

### Product Information

<b>Calculated MW</b>	85kDa
<b>Observed MW</b>	85kDa
<b>Buffer</b>	PBS with 0.02% sodium azide,50% glycerol,pH7.3.
<b>Purify</b>	Affinity purification
<b>Dilution</b>	WB 1:500-1:2000,IHC 1:50-1:200

### Background

The protein encoded by this gene belongs to the aconitase/IPM isomerase family. It is an enzyme that catalyzes the interconversion of citrate to isocitrate via cis-aconitate in the second step of the TCA cycle. This protein is encoded in the nucleus and functions in the mitochondrion. It was found to be one of the mitochondrial matrix proteins that are preferentially degraded by the serine protease 15 (PRSS15), also known as Lon protease, after oxidative modification.

**Focus on your research  
 Service for life science**

Applications:WB-Western Blot IHC-Immunohistochemistry IF-Immunofluorescence IP-Immunoprecipitation FC-Flow cytometry ChIP-Chromatin Immunoprecipitation Reactivity: H-Human R-Rat M-Mouse Mk-Monkey Dg-Dog Ch-Chicken Hm-Hamster Rb-Rabbit Sh-Sheep Pg-Pig Z-Zebrafish X-Xenopus C-Cow.