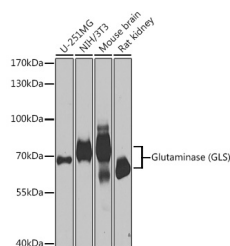


GLS Polyclonal Antibody

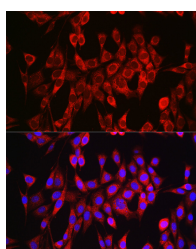
Catalog No.	E-AB-62763	Reactivity	H,M,R
Storage	Store at -20°C. Avoid freeze / thaw cycles.	Host	Rabbit
Applications	WB,IF	Isotype	IgG

Note: Centrifuge before opening to ensure complete recovery of vial contents.

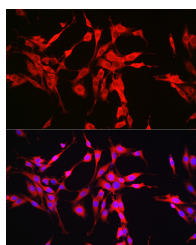
Images



Western blot analysis of extracts of various cell lines using Glutaminase (Glutaminase (GLS)) Polyclonal Antibody at 1:1000 dilution.



Immunofluorescence analysis of NIH/3T3 cells using Glutaminase (GLS) Polyclonal Antibody at dilution of 1:150. Blue: DAPI for nuclear staining.



Immunofluorescence analysis of PC-12 cells using Glutaminase (GLS) Polyclonal antibody at dilution of 1:150. Blue: DAPI for nuclear staining.

Immunogen Information

Immunogen	Recombinant fusion protein of human GLS
GeneID	2744
Swissprot	O94925
Synonyms	GLS,AAD20,GAC,GAM,GLS1,KGA

Product Information

Calculated MW	17kDa/65kDa/73kDa
Observed MW	65-73kDa
Buffer	PBS with 0.05% proclin300,50% glycerol,pH7.3.
Purify	Affinity purification
Dilution	WB 1:500-1:2000,IF 1:50-1:200

Background

This gene encodes the K-type mitochondrial glutaminase. The encoded protein is an phosphate-activated amidohydrolase that catalyzes the hydrolysis of glutamine to glutamate and ammonia. This protein is primarily expressed in the brain and kidney plays an essential role in generating energy for metabolism, synthesizing the brain neurotransmitter glutamate and maintaining acid-base balance in the kidney. Alternate splicing results in multiple transcript variants.

For Research Use Only

Thank you for your recent purchase.
 If you would like to learn more about antibodies, please visit www.elabscience.com.

**Focus on your research
 Service for life science**

Applications:WB-Western Blot IHC-Immunohistochemistry IF-Immunofluorescence IP-Immunoprecipitation FC-Flow cytometry ChIP-Chromatin Immunoprecipitation Reactivity: H-Human R-Rat M-Mouse Mk-Monkey Dg-Dog Ch-Chicken Hm-Hamster Rb-Rabbit Sh-Sheep Pg-Pig Z-Zebrafish X-Xenopus C-Cow.