

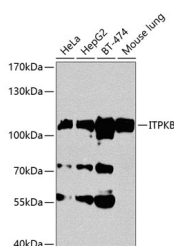
## ITPKB Polyclonal Antibody

**Catalog No.** E-AB-62803  
**Storage** Store at -20°C. Avoid freeze / thaw cycles.  
**Applications** WB

**Reactivity** H,M,R  
**Host** Rabbit  
**Isotype** IgG

**Note:** Centrifuge before opening to ensure complete recovery of vial contents.

### Images



Western blot analysis of extracts of various cell lines using ITPKB Polyclonal Antibody at 1:1000 dilution.

### Immunogen Information

**Immunogen** Recombinant fusion protein of human ITPKB  
**GeneID** 3707  
**Swissprot** P27987  
**Synonyms** ITPKB,IP3-3KB,IP3K,IP3K-B,IP3KB,PIG37

### Product Information

**Calculated MW** 67kDa/102kDa  
**Observed MW** 102kDa  
**Buffer** PBS with 0.02% sodium azide,50% glycerol,pH7.3.  
**Purify** Affinity purification  
**Dilution** WB 1:200-1:2000

### Background

The protein encoded by this protein regulates inositol phosphate metabolism by phosphorylation of second messenger inositol 1,4,5-trisphosphate to Ins(1,3,4,5)P4. The activity of this encoded protein is responsible for regulating the levels of a large number of inositol polyphosphates that are important in cellular signaling. Both calcium/calmodulin and protein phosphorylation mechanisms control its activity.

### For Research Use Only

Thank you for your recent purchase.  
If you would like to learn more about antibodies, please visit [www.elabscience.com](http://www.elabscience.com).

### Focus on your research Service for life science

Applications:WB-Western Blot IHC-Immunohistochemistry IF-Immunofluorescence IP-Immunoprecipitation FC-Flow cytometry ChIP-Chromatin Immunoprecipitation Reactivity: H-Human R-Rat M-Mouse Mk-Monkey Dg-Dog Ch-Chicken Hm-Hamster Rb-Rabbit Sh-Sheep Pg-Pig Z-Zebrafish X-Xenopus C-Cow.