

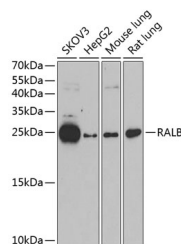
RALB Polyclonal Antibody

Catalog No. E-AB-65464
Storage Store at -20°C. Avoid freeze / thaw cycles.
Applications WB,IHC

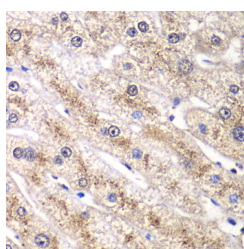
Reactivity H,M,R
Host Rabbit
Isotype IgG

Note: Centrifuge before opening to ensure complete recovery of vial contents.

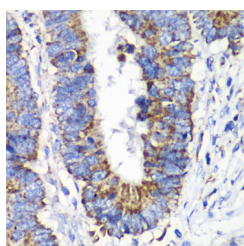
Images



Western blot analysis of extracts of various cell lines using RALB Polyclonal Antibody at dilution of 1:1000.



Immunohistochemistry of paraffin-embedded Human liver tissue using RALB Polyclonal Antibody at dilution of 1:100 (40x lens).



Immunohistochemistry of paraffin-embedded Human colon carcinoma using RALB Polyclonal Antibody at dilution of 1:100 (40x lens).

Immunogen Information

Immunogen Recombinant fusion protein of human RALB (NP_002872.1).
GeneID 5899
Swissprot P11234
Synonyms RALB

Product Information

Calculated MW 23kDa/25kDa
Observed MW 23kDa
Buffer PBS with 0.02% sodium azide, 50% glycerol, pH7.3.
Purify Affinity purification
Dilution WB 1:500-1:2000 IHC 1:50-1:200

Background

This gene encodes a GTP-binding protein that belongs to the small GTPase superfamily and Ras family of proteins. GTP-binding proteins mediate the transmembrane signaling initiated by the occupancy of certain cell surface receptors.

For Research Use Only

Thank you for your recent purchase.
If you would like to learn more about antibodies, please visit www.elabscience.com.

Focus on your research
Service for life science

Applications: WB-Western Blot IHC-Immunohistochemistry IF-Immunofluorescence IP-Immunoprecipitation FC-Flow cytometry ChIP-Chromatin Immunoprecipitation Reactivity: H-Human R-Rat M-Mouse Mk-Monkey Dg-Dog Ch-Chicken Hm-Hamster Rb-Rabbit Sh-Sheep Pg-Pig Z-Zebrafish X-Xenopus C-Cow.