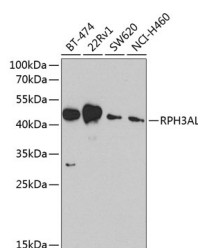


RPH3AL Polyclonal Antibody

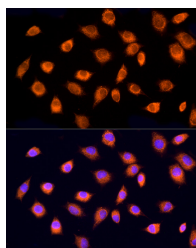
Catalog No.	E-AB-63005	Reactivity	H,M
Storage	Store at -20°C. Avoid freeze / thaw cycles.	Host	Rabbit
Applications	WB,IF	Isotype	IgG

Note: Centrifuge before opening to ensure complete recovery of vial contents.

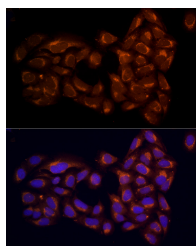
Images



Western blot analysis of extracts of various cell lines using RPH3AL Polyclonal Antibody at 1:1000 dilution.



Immunofluorescence analysis of L929 cells using RPH3AL Polyclonal Antibody at dilution of 100 (40x lens). Blue: DAPI for nuclear staining.



Immunofluorescence analysis of U2OS cells using RPH3AL Polyclonal antibody at dilution of 100 (40x lens). Blue: DAPI for nuclear staining.

Immunogen Information

Immunogen	Recombinant fusion protein of human RPH3AL
GeneID	9501
Swissprot	Q9UNE2
Synonyms	RPH3AL,NOC2

Product Information

Calculated MW	31kDa/34kDa
Observed MW	45kDa
Buffer	PBS with 0.02% sodium azide,50% glycerol,pH7.3.
Purify	Affinity purification
Dilution	WB 1:500-1:2000,IF 1:50-1:200

Background

The protein encoded by this gene plays a direct regulatory role in calcium-dependent exocytosis in both endocrine and exocrine cells and plays a key role in insulin secretion by pancreatic cells. This gene is likely a tumor suppressor. Alternative splicing results in multiple transcript variants encoding distinct isoforms.

For Research Use Only

Thank you for your recent purchase.
 If you would like to learn more about antibodies, please visit www.elabscience.com.

Focus on your research
Service for life science

Applications:WB-Western Blot IHC-Immunohistochemistry IF-Immunofluorescence IP-Immunoprecipitation FC-Flow cytometry ChIP-Chromatin Immunoprecipitation Reactivity: H-Human R-Rat M-Mouse Mk-Monkey Dg-Dog Ch-Chicken Hm-Hamster Rb-Rabbit Sh-Sheep Pg-Pig Z-Zebrafish X-Xenopus C-Cow.