

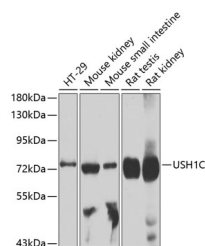
USH1C Polyclonal Antibody

Catalog No. E-AB-62332
Storage Store at -20°C. Avoid freeze / thaw cycles.
Applications WB

Reactivity H,M,R
Host Rabbit
Isotype IgG

Note: Centrifuge before opening to ensure complete recovery of vial contents.

Images



Western blot analysis of extracts of various cell lines using USH1C Polyclonal Antibody at 1:1000 dilution.

Immunogen Information

Immunogen Recombinant fusion protein of zebrafish USH1C
GeneID 564412
Swissprot Q9ES64
Synonyms USH1C,AIE-75,DFNB18,DFNB18A,NY-CO-37,NY-CO-38,PDZ-45,PDZ-73,PDZ-73/NY-CO-38,PDZ73,PDZD7C,ush1cpst,harmonin

Product Information

Calculated MW 45kDa/58kDa/60kDa/62kDa/101kDa
Observed MW 73kDa
Buffer PBS with 0.02% sodium azide,50% glycerol,pH7.3.
Purify Affinity purification
Dilution WB 1:200-1:2000

Background

This gene encodes a scaffold protein that functions in the assembly of Usher protein complexes. The protein contains PDZ domains, a coiled-coil region with a bipartite nuclear localization signal and a PEST degradation sequence. Defects in this gene are the cause of Usher syndrome type 1C and non-syndromic sensorineural deafness autosomal recessive type 18. Multiple transcript variants encoding different isoforms have been found for this gene.

For Research Use Only

Thank you for your recent purchase.
If you would like to learn more about antibodies, please visit www.elabscience.com.

Focus on your research Service for life science

Applications:WB-Western Blot IHC-Immunohistochemistry IF-Immunofluorescence IP-Immunoprecipitation FC-Flow cytometry ChIP-Chromatin Immunoprecipitation Reactivity: H-Human R-Rat M-Mouse Mk-Monkey Dg-Dog Ch-Chicken Hm-Hamster Rb-Rabbit Sh-Sheep Pg-Pig Z-Zebrafish X-Xenopus C-Cow.