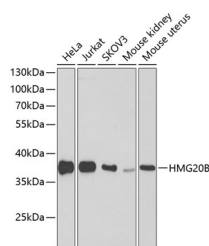


## HMG20B Polyclonal Antibody

<b>Catalog No.</b>	E-AB-62341	<b>Reactivity</b>	H,M,R
<b>Storage</b>	Store at -20°C. Avoid freeze / thaw cycles.	<b>Host</b>	Rabbit
<b>Applications</b>	WB	<b>Isotype</b>	IgG

**Note:** Centrifuge before opening to ensure complete recovery of vial contents.

### Images



Western blot analysis of extracts of various cell lines using HMG20B Polyclonal Antibody at dilution of 1:1000.

### Immunogen Information

<b>Immunogen</b>	Recombinant fusion protein of human HMG20B (NP_006330.2).
<b>GeneID</b>	10362
<b>Swissprot</b>	Q9P0W2
<b>Synonyms</b>	HMG20B,BRAF25,BRAF35,HMGX2,HMGXB2,PP7706,SMARCE1r,SOXL,pp8857

### Product Information

<b>Calculated MW</b>	24kDa/32kDa/35kDa
<b>Observed MW</b>	36kDa
<b>Buffer</b>	PBS with 0.02% sodium azide, 50% glycerol, pH7.3.
<b>Purify</b>	Affinity purification
<b>Dilution</b>	WB 1:200-1:2000

### Background

HMG20B (High Mobility Group 20B) is a Protein Coding gene. Among its related pathways are Response to elevated platelet cytosolic Ca<sup>2+</sup> and Activated PKN1 stimulates transcription of AR (androgen receptor) regulated genes KLK2 and KLK3. Gene Ontology (GO) annotations related to this gene include protein heterodimerization activity and chromatin binding. An important paralog of this gene is HMG20A.

#### For Research Use Only

Thank you for your recent purchase.  
 If you would like to learn more about antibodies, please visit [www.elabscience.com](http://www.elabscience.com).

**Focus on your research  
 Service for life science**

Applications: WB-Western Blot IHC-Immunohistochemistry IF-Immunofluorescence IP-Immunoprecipitation FC-Flow cytometry ChIP-Chromatin Immunoprecipitation Reactivity: H-Human R-Rat M-Mouse Mk-Monkey Dg-Dog Ch-Chicken Hm-Hamster Rb-Rabbit Sh-Sheep Pg-Pig Z-Zebrafish X-Xenopus C-Cow.