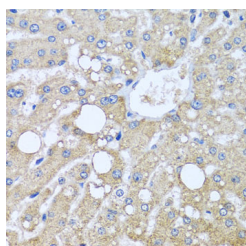


## TUBGCP3 Polyclonal Antibody

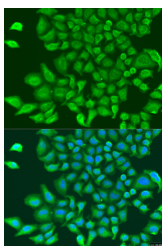
<b>Catalog No.</b>	E-AB-62346	<b>Reactivity</b>	H,M,R
<b>Storage</b>	Store at -20°C. Avoid freeze / thaw cycles.	<b>Host</b>	Rabbit
<b>Applications</b>	IHC,IF	<b>Isotype</b>	IgG

**Note:** Centrifuge before opening to ensure complete recovery of vial contents.

### Images



Immunohistochemistry of paraffin-embedded Human liver damage using TUBGCP3 Polyclonal Antibody at dilution of 1:100 (40x lens).



Immunofluorescence analysis of U2OS cells using TUBGCP3 Polyclonal Antibody at dilution of 1:100. Blue: DAPI for nuclear staining.

### Immunogen Information

<b>Immunogen</b>	Recombinant fusion protein of human TUBGCP3 (NP_001273207.1).
<b>GeneID</b>	10426
<b>Swissprot</b>	Q96CW5
<b>Synonyms</b>	TUBGCP3,104p,GCP3,Grip104,SPBC98,Spc98,Spc98p

### Product Information

<b>Buffer</b>	PBS with 0.02% sodium azide, 50% glycerol, pH7.3.
<b>Purify</b>	Affinity purification
<b>Dilution</b>	IHC 1:50-1:100 IF 1:50-1:100

### Background

TUBGCP3 (Tubulin Gamma Complex Associated Protein 3) is a Protein Coding gene. Diseases associated with TUBGCP3 include Cardiomyopathy, Dilated, 1P. Among its related pathways are G-Beta Gamma Signaling and Regulation of PLK1 Activity at G2/M Transition. Gene Ontology (GO) annotations related to this gene include structural molecule activity and gamma-tubulin binding. An important paralog of this gene is TUBGCP6.

#### For Research Use Only

Thank you for your recent purchase.  
If you would like to learn more about antibodies, please visit [www.elabscience.com](http://www.elabscience.com).

#### Focus on your research Service for life science

Applications:WB-Western Blot IHC-Immunohistochemistry IF-Immunofluorescence IP-Immunoprecipitation FC-Flow cytometry ChIP-Chromatin Immunoprecipitation Reactivity: H-Human R-Rat M-Mouse Mk-Monkey Dg-Dog Ch-Chicken Hm-Hamster Rb-Rabbit Sh-Sheep Pg-Pig Z-Zebrafish X-Xenopus C-Cow.