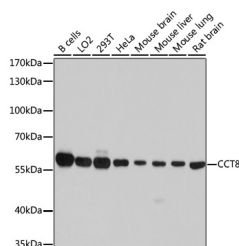


## CCT8 Polyclonal Antibody

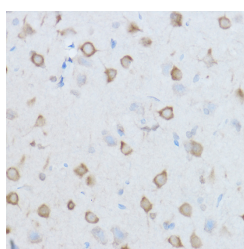
<b>Catalog No.</b>	E-AB-63788	<b>Reactivity</b>	H,M,R
<b>Storage</b>	Store at -20°C. Avoid freeze / thaw cycles.	<b>Host</b>	Rabbit
<b>Applications</b>	WB,IHC	<b>Isotype</b>	IgG

**Note:** Centrifuge before opening to ensure complete recovery of vial contents.

### Images



Western blot analysis of extracts of various cell lines using CCT8 Polyclonal Antibody at 1:7000 dilution.



Immunohistochemistry of paraffin-embedded Mouse brain using CCT8 Polyclonal Antibody at dilution of 1:100 (40x lens). Perform high pressure antigen retrieval with 10 mM citrate buffer pH 6.0 before commencing with IHC staining protocol.

### Immunogen Information

<b>Immunogen</b>	Recombinant fusion protein of human CCT8
<b>GeneID</b>	10694
<b>Swissprot</b>	P50990
<b>Synonyms</b>	CCT8, C21orf112, Cctq, D21S246, PRED71

### Product Information

<b>Calculated MW</b>	51kDa/57kDa/59kDa
<b>Observed MW</b>	60kDa
<b>Buffer</b>	PBS with 0.02% sodium azide, 50% glycerol, pH7.3.
<b>Purify</b>	Affinity purification
<b>Dilution</b>	WB 1:1000-1:2000, IHC 1:50-1:200

### Background

This gene encodes the theta subunit of the CCT chaperonin, which is abundant in the eukaryotic cytosol and may be involved in the transport and assembly of newly synthesized proteins. Alternative splicing results in multiple transcript variants of this gene. A pseudogene related to this gene is located on chromosome 1.

#### For Research Use Only

Thank you for your recent purchase.  
If you would like to learn more about antibodies, please visit [www.elabscience.com](http://www.elabscience.com).

#### Focus on your research Service for life science

Applications: WB-Western Blot IHC-Immunohistochemistry IF-Immunofluorescence IP-Immunoprecipitation FC-Flow cytometry ChIP-Chromatin Immunoprecipitation Reactivity: H-Human R-Rat M-Mouse Mk-Monkey Dg-Dog Ch-Chicken Hm-Hamster Rb-Rabbit Sh-Sheep Pg-Pig Z-Zebrafish X-Xenopus C-Cow.