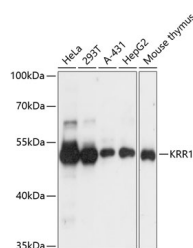


## KRR1 Polyclonal Antibody

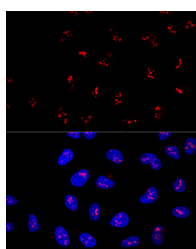
<b>Catalog No.</b>	E-AB-65481	<b>Reactivity</b>	H,M,R
<b>Storage</b>	Store at -20°C. Avoid freeze / thaw cycles.	<b>Host</b>	Rabbit
<b>Applications</b>	WB,IF	<b>Isotype</b>	IgG

**Note:** Centrifuge before opening to ensure complete recovery of vial contents.

### Images



Western blot analysis of extracts of various cell lines using KRR1 Polyclonal Antibody at dilution of 1:3000.



Confocal immunofluorescence analysis of U2OS cells using KRR1 Polyclonal Antibody at dilution of 1:100. Blue: DAPI for nuclear staining.

### Immunogen Information

<b>Immunogen</b>	Recombinant fusion protein of human KRR1 (NP_008974.5).
<b>GeneID</b>	11103
<b>Swissprot</b>	Q13601
<b>Synonyms</b>	KRR1,HRB2,RIP-1

### Product Information

<b>Calculated MW</b>	36kDa/43kDa
<b>Observed MW</b>	44kDa
<b>Buffer</b>	PBS with 0.02% sodium azide, 50% glycerol, pH7.3.
<b>Purify</b>	Affinity purification
<b>Dilution</b>	WB 1:500-1:2000 IF 1:50-1:200

### Background

The SSU is a large ribonucleoprotein consisting of at least 40 proteins and the U3 small nucleolar RNA. It is involved in pre-rRNA processing and ribosome assembly. The SSU is necessary for the biogenesis of the 18S rRNA. Cells that are depleted of SSU proteins will arrest in the G1 phase of the cell cycle. KRR1, also known as HRB2 (HIV-1 Rev binding protein 2) or RIP-1 (Rev interacting protein 1), is a nonribosomal component of the small subunit processome (SSU). KRR1 is 381 amino acids in length and is evolutionarily conserved among human, yeast, fly, nematode and rice. KRR1 localizes to the nucleolus and is highly expressed in dividing cells. It contains one conserved KH domain (RNA-binding motif) and is a crucial component of the SSU, required for both rRNA maturation and ribosome biogenesis.

#### For Research Use Only

Thank you for your recent purchase.  
 If you would like to learn more about antibodies, please visit [www.elabscience.com](http://www.elabscience.com).

**Focus on your research**  
**Service for life science**

Applications:WB-Western Blot IHC-Immunohistochemistry IF-Immunofluorescence IP-Immunoprecipitation FC-Flow cytometry ChIP-Chromatin Immunoprecipitation Reactivity: H-Human R-Rat M-Mouse Mk-Monkey Dg-Dog Ch-Chicken Hm-Hamster Rb-Rabbit Sh-Sheep Pg-Pig Z-Zebrafish X-Xenopus C-Cow.