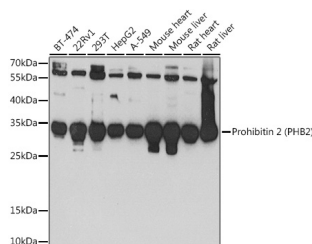


## PHB2 Polyclonal Antibody

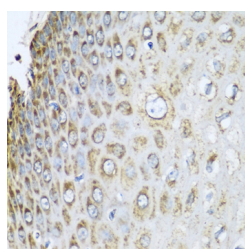
<b>Catalog No.</b>	E-AB-62381	<b>Reactivity</b>	H,M,R
<b>Storage</b>	Store at -20°C. Avoid freeze / thaw cycles.	<b>Host</b>	Rabbit
<b>Applications</b>	WB,IHC	<b>Isotype</b>	IgG

**Note:** Centrifuge before opening to ensure complete recovery of vial contents.

### Images



Western blot analysis of extracts of various cell lines using Prohibitin 2 (Prohibitin 2 (PHB2)) Polyclonal Antibody at 1:1000 dilution.



Immunohistochemistry of paraffin-embedded human esophagus using Prohibitin 2 (Prohibitin 2 (PHB2)) Polyclonal Antibody at dilution of 1:100 (40x lens). Perform microwave antigen retrieval with 10 mM PBS buffer pH 7.2 before commencing with IHC staining protocol.

### Immunogen Information

<b>Immunogen</b>	Recombinant fusion protein of human PHB2
<b>GeneID</b>	11331
<b>Swissprot</b>	Q99623
<b>Synonyms</b>	PHB2,BAP,BCAP37,Bap37,PNAS-141,REA,hBAP,p22

### Product Information

<b>Calculated MW</b>	29kDa/33kDa
<b>Observed MW</b>	32kDa
<b>Buffer</b>	PBS with 0.02% sodium azide,50% glycerol,pH7.3.
<b>Purify</b>	Affinity purification
<b>Dilution</b>	WB 1:500-1:2000,IHC 1:50-1:100

### Background

Protein with pleiotropic attributes mediated in a cell-compartment- and tissue-specific manner, which include the plasma membrane-associated cell signaling functions, mitochondrial chaperone, and transcriptional co-regulator of transcription factors and sex steroid hormones in the nucleus.

#### For Research Use Only

Thank you for your recent purchase.  
 If you would like to learn more about antibodies, please visit [www.elabscience.com](http://www.elabscience.com).

**Focus on your research  
 Service for life science**

Applications:WB-Western Blot IHC-Immunohistochemistry IF-Immunofluorescence IP-Immunoprecipitation FC-Flow cytometry ChIP-Chromatin Immunoprecipitation Reactivity: H-Human R-Rat M-Mouse Mk-Monkey Dg-Dog Ch-Chicken Hm-Hamster Rb-Rabbit Sh-Sheep Pg-Pig Z-Zebrafish X-Xenopus C-Cow.