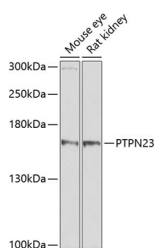


PTPN23 Polyclonal Antibody

Catalog No.	E-AB-62406	Reactivity	M,R
Storage	Store at -20°C. Avoid freeze / thaw cycles.	Host	Rabbit
Applications	WB	Isotype	IgG

Note: Centrifuge before opening to ensure complete recovery of vial contents.

Images



Western blot analysis of extracts of various cell lines using PTPN23 Polyclonal Antibody at dilution of 1:1000.

Immunogen Information

Immunogen	Recombinant fusion protein of human PTPN23 (NP_056281.1).
GeneID	25930
Swissprot	Q9H3S7
Synonyms	PTPN23,HD-PTP,HDPTP,PTP-TD14

Product Information

Calculated MW	178kDa
Observed MW	179kDa
Buffer	PBS with 0.02% sodium azide, 50% glycerol, pH7.3.
Purify	Affinity purification
Dilution	WB 1:500-1:2000

Background

This gene encodes a member of the non-receptor type protein-tyrosine phosphatase family. The encoded protein may be involved in the regulation of small nuclear ribonucleo protein assembly and pre-mRNA splicing by modifying the survival motor neuron (SMN) complex. The encoded protein additionally plays a role in ciliogenesis and is part of endosomal sorting complex required for transport (ESCRT) pathways. This gene may serve a tumor suppressor function.

For Research Use Only

Thank you for your recent purchase.
 If you would like to learn more about antibodies, please visit www.elabscience.com.

**Focus on your research
 Service for life science**

Applications:WB-Western Blot IHC-Immunohistochemistry IF-Immunofluorescence IP-Immunoprecipitation FC-Flow cytometry ChIP-Chromatin Immunoprecipitation Reactivity: H-Human R-Rat M-Mouse Mk-Monkey Dg-Dog Ch-Chicken Hm-Hamster Rb-Rabbit Sh-Sheep Pg-Pig Z-Zebrafish X-Xenopus C-Cow.