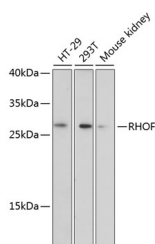


## RHOF Polyclonal Antibody

<b>Catalog No.</b>	E-AB-65496	<b>Reactivity</b>	H,M
<b>Storage</b>	Store at -20°C. Avoid freeze / thaw cycles.	<b>Host</b>	Rabbit
<b>Applications</b>	WB	<b>Isotype</b>	IgG

**Note:** Centrifuge before opening to ensure complete recovery of vial contents.

### Images



Western blot analysis of extracts of various cell lines using RHOF Polyclonal Antibody at dilution of 1:3000.

### Immunogen Information

<b>Immunogen</b>	Recombinant fusion protein of human RHOF (NP_061907.2).
<b>GeneID</b>	54509
<b>Swissprot</b>	Q9HBH0
<b>Synonyms</b>	RHOF,ARHF,RIF

### Product Information

<b>Calculated MW</b>	18kDa/23kDa
<b>Observed MW</b>	27kDa
<b>Buffer</b>	PBS with 0.02% sodium azide, 50% glycerol, pH7.3.
<b>Purify</b>	Affinity purification
<b>Dilution</b>	WB 1:500-1:2000

### Background

RHOF (Ras Homolog Family Member F, Filopodia Associated) is a Protein Coding gene. Diseases associated with RHOF include Deafness, Autosomal Recessive 104 and Ascaridiasis. Among its related pathways are Signaling by GPCR and Innate Immune System. Gene Ontology (GO) annotations related to this gene include GTP binding and GTPase activity. An important paralog of this gene is RHOD.

#### For Research Use Only

Thank you for your recent purchase.  
 If you would like to learn more about antibodies, please visit [www.elabscience.com](http://www.elabscience.com).

**Focus on your research  
 Service for life science**

Applications:WB-Western Blot IHC-Immunohistochemistry IF-Immunofluorescence IP-Immunoprecipitation FC-Flow cytometry ChIP-Chromatin Immunoprecipitation Reactivity: H-Human R-Rat M-Mouse Mk-Monkey Dg-Dog Ch-Chicken Hm-Hamster Rb-Rabbit Sh-Sheep Pg-Pig Z-Zebrafish X-Xenopus C-Cow.