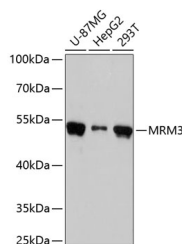


MRM3 Polyclonal Antibody

Catalog No.	E-AB-65498	Reactivity	H
Storage	Store at -20°C. Avoid freeze / thaw cycles.	Host	Rabbit
Applications	WB	Isotype	IgG

Note: Centrifuge before opening to ensure complete recovery of vial contents.

Images



Western blot analysis of extracts of various cell lines using MRM3 Polyclonal Antibody at dilution of 1:3000.

Immunogen Information

Immunogen	Recombinant fusion protein of human MRM3 (NP_060616.1).
GeneID	55178
Swissprot	Q9HC36
Synonyms	MRM3,RMTL1,RNMTL1

Product Information

Calculated MW	47kDa
Observed MW	47kDa
Buffer	PBS with 0.02% sodium azide, 50% glycerol, pH7.3.
Purify	Affinity purification
Dilution	WB 1:500-1:2000

Background

Efficient translation of mitochondrial-derived transcripts requires proper assembly of the large subunit of the mitochondrial ribosome. Central to the biogenesis of this large subunit is the A-loop of mitochondrial 16S rRNA, which is modified by three rRNA methyltransferases located near mtDNA nucleoids. The protein encoded by this gene methylates G(1370) of 16S rRNA, and this modification is necessary for proper ribosomal large subunit assembly. Two transcript variants encoding different isoforms have been found for this gene.

For Research Use Only

Thank you for your recent purchase.
 If you would like to learn more about antibodies, please visit www.elabscience.com.

**Focus on your research
 Service for life science**

Applications:WB-Western Blot IHC-Immunohistochemistry IF-Immunofluorescence IP-Immunoprecipitation FC-Flow cytometry ChIP-Chromatin Immunoprecipitation Reactivity: H-Human R-Rat M-Mouse Mk-Monkey Dg-Dog Ch-Chicken Hm-Hamster Rb-Rabbit Sh-Sheep Pg-Pig Z-Zebrafish X-Xenopus C-Cow.