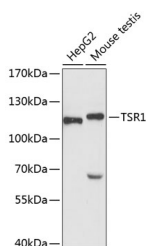


TSR1 Polyclonal Antibody

Catalog No.	E-AB-65500	Reactivity	H,M
Storage	Store at -20°C. Avoid freeze / thaw cycles.	Host	Rabbit
Applications	WB	Isotype	IgG

Note: Centrifuge before opening to ensure complete recovery of vial contents.

Images



Western blot analysis of extracts of various cell lines using TSR1 Polyclonal Antibody at dilution of 1:3000.

Immunogen Information

Immunogen	Recombinant fusion protein of human TSR1 (NP_060598.3).
GeneID	55720
Swissprot	Q2NL82
Synonyms	TSR1

Product Information

Calculated MW	91kDa
Observed MW	110kDa
Buffer	PBS with 0.02% sodium azide, 50% glycerol, pH7.3.
Purify	Affinity purification
Dilution	WB 1:500-1:2000

Background

TSR1 (TSR1 Ribosome Maturation Factor) is a Protein Coding gene. Diseases associated with TSR1 include Epithelial Malignant Thymoma and Dendritic Cell Thymoma. Among its related pathways are rRNA processing in the nucleus and cytosol and Gene Expression. An important paralog of this gene is BMS1.

For Research Use Only

Thank you for your recent purchase.
 If you would like to learn more about antibodies, please visit www.elabscience.com.

**Focus on your research
 Service for life science**

Applications:WB-Western Blot IHC-Immunohistochemistry IF-Immunofluorescence IP-Immunoprecipitation FC-Flow cytometry ChIP-Chromatin Immunoprecipitation Reactivity: H-Human R-Rat M-Mouse Mk-Monkey Dg-Dog Ch-Chicken Hm-Hamster Rb-Rabbit Sh-Sheep Pg-Pig Z-Zebrafish X-Xenopus C-Cow.