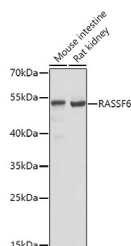


## RASSF6 Polyclonal Antibody

<b>Catalog No.</b>	E-AB-62579	<b>Reactivity</b>	M,R
<b>Storage</b>	Store at -20°C. Avoid freeze / thaw cycles.	<b>Host</b>	Rabbit
<b>Applications</b>	WB	<b>Isotype</b>	IgG

**Note:** Centrifuge before opening to ensure complete recovery of vial contents.

### Images



Western blot analysis of extracts of various cell lines using RASSF6 Polyclonal Antibody at dilution of 1:1000.

### Immunogen Information

<b>Immunogen</b>	Recombinant fusion protein of human RASSF6 (NP_001257320.1).
<b>GeneID</b>	166824
<b>Swissprot</b>	Q6ZTQ3
<b>Synonyms</b>	RASSF6

### Product Information

<b>Calculated MW</b>	35kDa/37kDa/39kDa/43kDa
<b>Observed MW</b>	54kDa
<b>Buffer</b>	PBS with 0.02% sodium azide, 50% glycerol, pH7.3.
<b>Purify</b>	Affinity purification
<b>Dilution</b>	WB 1:500-1:2000

### Background

This gene encodes a member of the Ras-association domain family (RASSF). Members of this family form the core of a highly conserved tumor suppressor network, the Salvador-Warts-Hippo (SWH) pathway. The protein encoded by this gene is a Ras effector protein that induces apoptosis. A genomic region containing this gene has been linked to susceptibility to viral bronchiolitis. Alternative splicing results in multiple transcript variants and protein isoforms.

### For Research Use Only

Thank you for your recent purchase.  
If you would like to learn more about antibodies, please visit [www.elabscience.com](http://www.elabscience.com).

### Focus on your research Service for life science

Applications: WB-Western Blot IHC-Immunohistochemistry IF-Immunofluorescence IP-Immunoprecipitation FC-Flow cytometry ChIP-Chromatin Immunoprecipitation Reactivity: H-Human R-Rat M-Mouse Mk-Monkey Dg-Dog Ch-Chicken Hm-Hamster Rb-Rabbit Sh-Sheep Pg-Pig Z-Zebrafish X-Xenopus C-Cow.