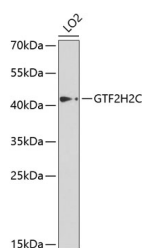


GTF2H2C Polyclonal Antibody

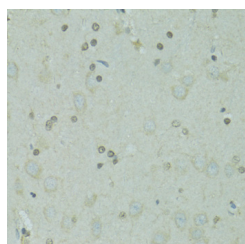
Catalog No.	E-AB-65514	Reactivity	H,R
Storage	Store at -20°C. Avoid freeze / thaw cycles.	Host	Rabbit
Applications	WB,IHC	Isotype	IgG

Note: Centrifuge before opening to ensure complete recovery of vial contents.

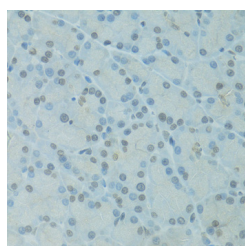
Images



Western blot analysis of extracts of LO2 cells using GTF2H2C Polyclonal Antibody at dilution of 1:1000.



Immunohistochemistry of paraffin-embedded Rat brain using GTF2H2C Polyclonal Antibody at dilution of 1:100 (40x lens).



Immunohistochemistry of paraffin-embedded Rat pancreas using GTF2H2C Polyclonal Antibody at dilution of 1:100 (40x lens).

Immunogen Information

Immunogen	Recombinant fusion protein of human GTF2H2C (NP_001092198.1).
GeneID	728340
Swissprot	Q6P1K8
Synonyms	GTF2H2C,GTF2H2C_2

Product Information

Calculated MW	44kDa
Observed MW	44kDa
Buffer	PBS with 0.02% sodium azide, 50% glycerol, pH7.3.
Purify	Affinity purification
Dilution	WB 1:200-1:2000 IHC 1:50-1:200

Background

GTF2H2C (GTF2H2 Family Member C) is a Protein Coding gene. Diseases associated with GTF2H2C include Spinal Muscular Atrophy, Type Iv and Spinal Muscular Atrophy, Type Iii. Among its related pathways are RNA Polymerase II Transcription Initiation And Promoter Clearance and Nucleotide excision repair. An important paralog of this gene is GTF2H2.

For Research Use Only

Thank you for your recent purchase.
 If you would like to learn more about antibodies, please visit www.elabscience.com.

**Focus on your research
 Service for life science**

Applications:WB-Western Blot IHC-Immunohistochemistry IF-Immunofluorescence IP-Immunoprecipitation FC-Flow cytometry ChIP-Chromatin Immunoprecipitation Reactivity: H-Human R-Rat M-Mouse Mk-Monkey Dg-Dog Ch-Chicken Hm-Hamster Rb-Rabbit Sh-Sheep Pg-Pig Z-Zebrafish X-Xenopus C-Cow.