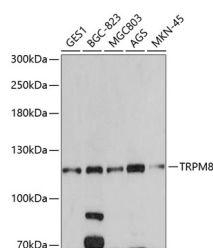


## TRPM8 Polyclonal Antibody

<b>Catalog No.</b>	E-AB-63819	<b>Reactivity</b>	H
<b>Storage</b>	Store at -20°C. Avoid freeze / thaw cycles.	<b>Host</b>	Rabbit
<b>Applications</b>	WB	<b>Isotype</b>	IgG

**Note:** Centrifuge before opening to ensure complete recovery of vial contents.

### Images



Western blot analysis of extracts of various cell lines using TRPM8 Polyclonal Antibody at dilution of 1:500.

### Immunogen Information

<b>Immunogen</b>	Recombinant fusion protein of human TRPM8 (NP_076985.4).
<b>GeneID</b>	79054
<b>Swissprot</b>	Q7Z2W7
<b>Synonyms</b>	TRPM8,LTRPC6,TRPP8

### Product Information

<b>Calculated MW</b>	5kDa/18kDa/79kDa/127kDa
<b>Observed MW</b>	126kDa
<b>Buffer</b>	PBS with 0.02% sodium azide, 50% glycerol, pH7.3.
<b>Purify</b>	Affinity purification
<b>Dilution</b>	WB 1:500-1:2000

### Background

TRPM8 (Transient Receptor Potential Cation Channel Subfamily M Member 8) is a Protein Coding gene. Diseases associated with TRPM8 include Migraine Without Aura and Dentin Sensitivity. Among its related pathways are CREB Pathway and TRP channels. Gene Ontology (GO) annotations related to this gene include protein homodimerization activity and calcium channel activity. An important paralog of this gene is TRPM2.

#### For Research Use Only

Thank you for your recent purchase.  
 If you would like to learn more about antibodies, please visit [www.elabscience.com](http://www.elabscience.com).

**Focus on your research  
 Service for life science**

Applications: WB-Western Blot IHC-Immunohistochemistry IF-Immunofluorescence IP-Immunoprecipitation FC-Flow cytometry ChIP-Chromatin Immunoprecipitation Reactivity: H-Human R-Rat M-Mouse Mk-Monkey Dg-Dog Ch-Chicken Hm-Hamster Rb-Rabbit Sh-Sheep Pg-Pig Z-Zebrafish X-Xenopus C-Cow.