

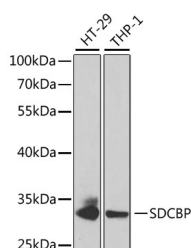
## SDCBP Polyclonal Antibody

**Catalog No.** E-AB-60924  
**Storage** Store at -20°C. Avoid freeze / thaw cycles.  
**Applications** WB,IF

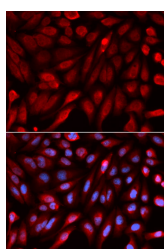
**Reactivity** H  
**Host** Rabbit  
**Isotype** IgG

**Note:** Centrifuge before opening to ensure complete recovery of vial contents.

### Images



Western blot analysis of extracts of various cell lines using SDCBP Polyclonal Antibody at dilution of 1:1000.



Immunofluorescence analysis of U2OS cells using SDCBP Polyclonal Antibody

### Immunogen Information

**Immunogen** Recombinant fusion protein of human SDCBP (NP\_001007068.1).  
**GeneID** 6386  
**Swissprot** O00560  
**Synonyms** SDCBP,MDA-9,MDA9,ST1,SYCL,TACIP18

### Product Information

**Calculated MW** 31kDa/32kDa  
**Observed MW** 32kDa  
**Buffer** PBS with 0.02% sodium azide, 50% glycerol, pH7.3.  
**Purify** Affinity purification  
**Dilution** WB 1:500-1:2000 IF 1:50-1:200

### Background

The protein encoded by this gene was initially identified as a molecule linking syndecan-mediated signaling to the cytoskeleton. The syntenin protein contains tandemly repeated PDZ domains that bind the cytoplasmic, C-terminal domains of a variety of transmembrane proteins. This protein may also affect cytoskeletal-membrane organization, cell adhesion, protein trafficking, and the activation of transcription factors. The protein is primarily localized to membrane-associated adherens junctions and focal adhesions but is also found at the endoplasmic reticulum and nucleus. Alternative splicing results in multiple transcript variants encoding different isoforms. Related pseudogenes have been identified on multiple chromosomes.

### For Research Use Only

Thank you for your recent purchase.  
If you would like to learn more about antibodies, please visit [www.elabscience.com](http://www.elabscience.com).

### Focus on your research Service for life science

Applications:WB-Western Blot IHC-Immunohistochemistry IF-Immunofluorescence IP-Immunoprecipitation FC-Flow cytometry ChIP-Chromatin Immunoprecipitation Reactivity: H-Human R-Rat M-Mouse Mk-Monkey Dg-Dog Ch-Chicken Hm-Hamster Rb-Rabbit Sh-Sheep Pg-Pig Z-Zebrafish X-Xenopus C-Cow.