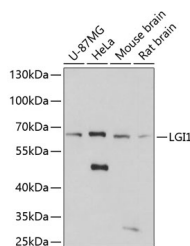


LGI1 Polyclonal Antibody

Catalog No.	E-AB-65517	Reactivity	H,M,R
Storage	Store at -20°C. Avoid freeze / thaw cycles.	Host	Rabbit
Applications	WB	Isotype	IgG

Note: Centrifuge before opening to ensure complete recovery of vial contents.

Images



Western blot analysis of extracts of various cell lines using LGI1 Polyclonal Antibody at dilution of 1:3000.

Immunogen Information

Immunogen	Recombinant fusion protein of human LGI1 (NP_005088.1).
GeneID	9211
Swissprot	O95970
Synonyms	LGI1,ADLTE,ADPAEF,ADPEAF,EPITEMPIN,EPT,ETL1,IB1099

Product Information

Calculated MW	33kDa/58kDa/63kDa
Observed MW	64kDa
Buffer	PBS with 0.02% sodium azide, 50% glycerol, pH7.3.
Purify	Affinity purification
Dilution	WB 1:500-1:2000

Background

This gene encodes a member of the secreted leucine-rich repeat (LRR) superfamily and shares homology with members of the SLIT protein family. The encoded protein may regulate the activity of voltage-gated potassium channels and may be involved in neuronal growth regulation and cell survival. This gene is rearranged as a result of translocations in glioblastoma cell lines, and it is frequently down-regulated or rearranged in malignant gliomas. Mutations in this gene result in autosomal dominant lateral temporal epilepsy. Alternative splicing results in multiple transcript variants.

For Research Use Only

Thank you for your recent purchase.
 If you would like to learn more about antibodies, please visit www.elabscience.com.

**Focus on your research
 Service for life science**

Applications:WB-Western Blot IHC-Immunohistochemistry IF-Immunofluorescence IP-Immunoprecipitation FC-Flow cytometry ChIP-Chromatin Immunoprecipitation Reactivity: H-Human R-Rat M-Mouse Mk-Monkey Dg-Dog Ch-Chicken Hm-Hamster Rb-Rabbit Sh-Sheep Pg-Pig Z-Zebrafish X-Xenopus C-Cow.