

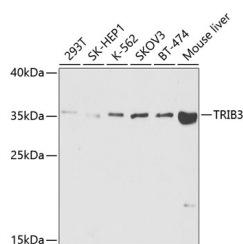
TRIB3 Polyclonal Antibody

Catalog No. E-AB-62503
Storage Store at -20°C. Avoid freeze / thaw cycles.
Applications WB

Reactivity H,M
Host Rabbit
Isotype IgG

Note: Centrifuge before opening to ensure complete recovery of vial contents.

Images



Western blot analysis of extracts of various cell lines using TRIB3 Polyclonal Antibody at dilution of 1:1000.

Immunogen Information

Immunogen Recombinant fusion protein of human TRIB3 (NP_066981.2).
GeneID 57761
Swissprot Q96RU7
Synonyms TRIB3, C20orf97, NIPK, SINK, SKIP3, TRB3

Product Information

Calculated MW 39kDa
Observed MW 35kDa
Buffer PBS with 0.02% sodium azide, 50% glycerol, pH7.3.
Purify Affinity purification
Dilution WB 1:500-1:2000

Background

The protein encoded by this gene is a putative protein kinase that is induced by the transcription factor NF-kappaB. The encoded protein is a negative regulator of NF-kappaB and can also sensitize cells to TNF- and TRAIL-induced apoptosis. In addition, this protein can negatively regulate the cell survival serine-threonine kinase AKT1. Differential promoter usage and alternate splicing result in multiple transcript variants.

For Research Use Only

Thank you for your recent purchase.
If you would like to learn more about antibodies, please visit www.elabscience.com.

Focus on your research Service for life science

Applications: WB-Western Blot IHC-Immunohistochemistry IF-Immunofluorescence IP-Immunoprecipitation FC-Flow cytometry ChIP-Chromatin Immunoprecipitation Reactivity: H-Human R-Rat M-Mouse Mk-Monkey Dg-Dog Ch-Chicken Hm-Hamster Rb-Rabbit Sh-Sheep Pg-Pig Z-Zebrafish X-Xenopus C-Cow.