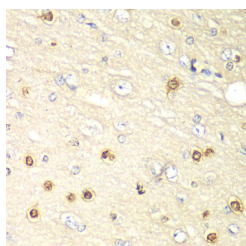


## (KO Validated) HIF1AN Polyclonal Antibody

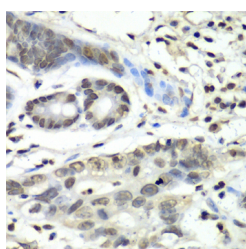
<b>Catalog No.</b>	E-AB-60976	<b>Reactivity</b>	H,M,R
<b>Storage</b>	Store at -20°C. Avoid freeze / thaw cycles.	<b>Host</b>	Rabbit
<b>Applications</b>	IHC,IF	<b>Isotype</b>	IgG

**Note:** Centrifuge before opening to ensure complete recovery of vial contents.

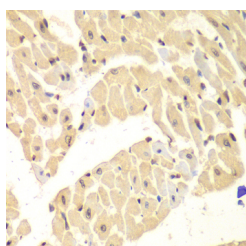
### Images



Immunohistochemistry of paraffin-embedded Rat brain using HIF1AN Polyclonal Antibody at dilution of 1:100 (40x lens).



Immunohistochemistry of paraffin-embedded Human gastric cancer using HIF1AN Polyclonal Antibody at dilution of 1:100 (40x lens).



Immunohistochemistry of paraffin-embedded Mouse heart using HIF1AN Polyclonal Antibody at dilution of 1:100 (40x lens).

### Immunogen Information

<b>Immunogen</b>	Recombinant fusion protein of human HIF1AN (NP_060372.2).
<b>GeneID</b>	55662
<b>Swissprot</b>	Q9NWT6
<b>Synonyms</b>	HIF1AN,FIH1

### Product Information

<b>Buffer</b>	PBS with 0.02% sodium azide, 50% glycerol, pH7.3.
<b>Purify</b>	Affinity purification
<b>Dilution</b>	IHC 1:50-1:200 IF 1:50-1:200

### Background

Factor inhibiting HIF-1 (FIH-1) exists as a homodimer and binds to HIF-1alpha. Specifically, FIH-1 operates as an asparaginyl hydroxylase. It catalyzes the hydroxylation of the beta-carbon of Asparagine residue 803 within the carboxy terminal transactivation domain of HIF-1alpha. This hydroxylation event blocks the association of HIF-1alpha with co-activators. FIH-1 also binds to von Hippel-Lindau (VHL) tumor suppressor protein, which represses transcriptional activity of HIF-1alpha. In transiently transfected human osteosarcoma cells, FIH-1 localizes to the cytoplasm.

#### For Research Use Only

Thank you for your recent purchase.  
 If you would like to learn more about antibodies, please visit [www.elabscience.com](http://www.elabscience.com).

**Focus on your research  
 Service for life science**

Applications: WB-Western Blot IHC-Immunohistochemistry IF-Immunofluorescence IP-Immunoprecipitation FC-Flow cytometry ChIP-Chromatin Immunoprecipitation Reactivity: H-Human R-Rat M-Mouse Mk-Monkey Dg-Dog Ch-Chicken Hm-Hamster Rb-Rabbit Sh-Sheep Pg-Pig Z-Zebrafish X-Xenopus C-Cow.