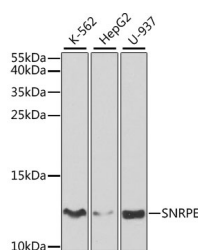


SNRPE Polyclonal Antibody

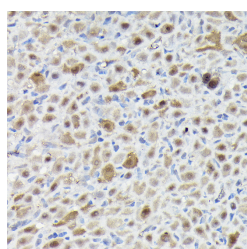
Catalog No.	E-AB-60989	Reactivity	H,M,R
Storage	Store at -20°C. Avoid freeze / thaw cycles.	Host	Rabbit
Applications	WB,IHC	Isotype	IgG

Note: Centrifuge before opening to ensure complete recovery of vial contents.

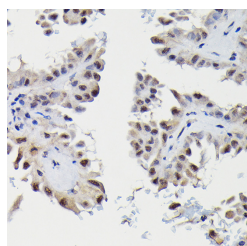
Images



Western blot analysis of extracts of various cell lines using SNRPE Polyclonal Antibody at 1:1000 dilution.



Immunohistochemistry of paraffin-embedded rat ovary using SNRPE Polyclonal Antibody at dilution of 1:50 (40x lens). Perform high pressure antigen retrieval with 10 mM citrate buffer pH 6.0 before commencing with IHC staining protocol.



Immunohistochemistry of paraffin-embedded human thyroid cancer using SNRPE Polyclonal antibody at dilution of 1:50 (40x lens). Perform high pressure antigen retrieval with 10

Immunogen Information

Immunogen	Recombinant fusion protein of human SNRPE
GeneID	6635
Swissprot	P62304
Synonyms	SNRPE, HYPT11, SME, Sm-E, snRNP-E

Product Information

Calculated MW	10kDa
Observed MW	11kDa
Buffer	PBS with 0.02% sodium azide, 50% glycerol, pH7.3.
Purify	Affinity purification
Dilution	WB 1:500-1:2000, IHC 1:50-1:200

Background

The protein encoded by this gene is a core component of U small nuclear ribonucleoproteins, which are key components of the pre-mRNA processing spliceosome. The encoded protein plays a role in the 3' end processing of histone transcripts. This protein is one of the targets in the autoimmune disease systemic lupus erythematosus, and mutations in this gene have been associated with hypotrichosis. Several pseudogenes of this gene have been identified.

For Research Use Only

Thank you for your recent purchase.
 If you would like to learn more about antibodies, please visit www.elabscience.com.

**Focus on your research
 Service for life science**

Applications: WB-Western Blot IHC-Immunohistochemistry IF-Immunofluorescence IP-Immunoprecipitation FC-Flow cytometry ChIP-Chromatin Immunoprecipitation Reactivity: H-Human R-Rat M-Mouse Mk-Monkey Dg-Dog Ch-Chicken Hm-Hamster Rb-Rabbit Sh-Sheep Pg-Pig Z-Zebrafish X-Xenopus C-Cow.

mM citrate buffer pH 6.0 before
commencing with IHC staining
protocol.

For Research Use Only

Thank you for your recent purchase.

If you would like to learn more about antibodies, please visit www.elabscience.com.

**Focus on your research
Service for life science**

Applications:WB-Western Blot IHC-Immunohistochemistry IF-Immunofluorescence IP-Immunoprecipitation FC-Flow cytometry CHIP-
Chromatin Immunoprecipitation Reactivity: H-Human R-Rat M-Mouse Mk-Monkey Dg-Dog Ch-Chicken Hm-Hamster Rb-Rabbit Sh-
Sheep Pg-Pig Z-Zebrafish X-Xenopus C-Cow.