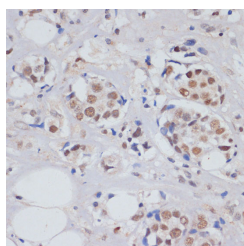


SKIV2L2 Polyclonal Antibody

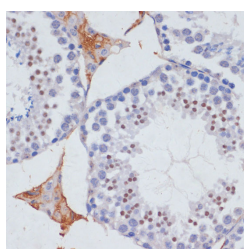
Catalog No.	E-AB-61020	Reactivity	H,M
Storage	Store at -20°C. Avoid freeze / thaw cycles.	Host	Rabbit
Applications	IHC	Isotype	IgG

Note: Centrifuge before opening to ensure complete recovery of vial contents.

Images



Immunohistochemistry of paraffin-embedded Human breast cancer using SKIV2L2 Polyclonal Antibody at dilution of 1:100 (40x lens).



Immunohistochemistry of paraffin-embedded Mouse testis using SKIV2L2 Polyclonal Antibody at dilution of 1:100 (40x lens).

Immunogen Information

Immunogen	Recombinant fusion protein of human SKIV2L2 (NP_056175.3).
GeneID	23517
Swissprot	P42285
Synonyms	SKIV2L2,Dob1,KIAA0052,Mtr4,fSAP118

Product Information

Buffer	PBS with 0.02% sodium azide, 50% glycerol, pH7.3.
Purify	Affinity purification
Dilution	IHC 1:50-1:200

Background

MTREX (Mtr4 Exosome RNA Helicase) is a Protein Coding gene. Diseases associated with MTREX include Posterior Myocardial Infarction and Robinow Syndrome, Autosomal Dominant 1. Among its related pathways are rRNA processing in the nucleus and cytosol and Gene Expression. An important paralog of this gene is SKIV2L.

For Research Use Only

Thank you for your recent purchase.
 If you would like to learn more about antibodies, please visit www.elabscience.com.

**Focus on your research
 Service for life science**

Applications:WB-Western Blot IHC-Immunohistochemistry IF-Immunofluorescence IP-Immunoprecipitation FC-Flow cytometry ChIP-Chromatin Immunoprecipitation Reactivity: H-Human R-Rat M-Mouse Mk-Monkey Dg-Dog Ch-Chicken Hm-Hamster Rb-Rabbit Sh-Sheep Pg-Pig Z-Zebrafish X-Xenopus C-Cow.