

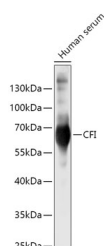
CFI Polyclonal Antibody

Catalog No. E-AB-62790
Storage Store at -20°C. Avoid freeze / thaw cycles.
Applications WB

Reactivity H,M
Host Rabbit
Isotype IgG

Note: Centrifuge before opening to ensure complete recovery of vial contents.

Images



Western blot analysis of extracts of Human serum using CFI Polyclonal Antibody at 1:500 dilution.

Immunogen Information

Immunogen Recombinant fusion protein of human CFI
GeneID 3426
Swissprot P05156
Synonyms CFI,AHUS3,ARMD13,C3BINA,C3b-INA,FI,IF,KAF

Product Information

Calculated MW 65kDa
Observed MW 60kDa
Buffer PBS with 0.02% sodium azide,50% glycerol,pH7.3.
Purify Affinity purification
Dilution WB 1:500-1:2000

Background

This gene encodes a serine proteinase that is essential for regulating the complement cascade. The encoded preproprotein is cleaved to produce both heavy and light chains, which are linked by disulfide bonds to form a heterodimeric glycoprotein. This heterodimer can cleave and inactivate the complement components C4b and C3b, and it prevents the assembly of the C3 and C5 convertase enzymes. Defects in this gene cause complement factor I deficiency, an autosomal recessive disease associated with a susceptibility to pyogenic infections. Mutations in this gene have been associated with a predisposition to atypical hemolytic uremic syndrome, a disease characterized by acute renal failure, microangiopathic hemolytic anemia and thrombocytopenia. Primary glomerulonephritis with immune deposits and age-related macular degeneration are other conditions associated with mutations of this gene.

For Research Use Only

Thank you for your recent purchase.
If you would like to learn more about antibodies, please visit www.elabscience.com.

Focus on your research Service for life science

Applications:WB-Western Blot IHC-Immunohistochemistry IF-Immunofluorescence IP-Immunoprecipitation FC-Flow cytometry ChIP-Chromatin Immunoprecipitation Reactivity: H-Human R-Rat M-Mouse Mk-Monkey Dg-Dog Ch-Chicken Hm-Hamster Rb-Rabbit Sh-Sheep Pg-Pig Z-Zebrafish X-Xenopus C-Cow.