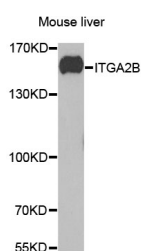


ITGA2B Polyclonal Antibody

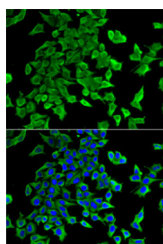
Catalog No.	E-AB-61058	Reactivity	H,M
Storage	Store at -20°C. Avoid freeze / thaw cycles.	Host	Rabbit
Applications	WB,IF	Isotype	IgG

Note: Centrifuge before opening to ensure complete recovery of vial contents.

Images



Western blot analysis of extracts of Mouse liver using ITGA2B Polyclonal Antibody at dilution of 1:1000.



Immunofluorescence analysis of U2OS cells using ITGA2B Polyclonal Antibody

Immunogen Information

Immunogen	Recombinant fusion protein of human ITGA2B (NP_000410.2).
GeneID	3674
Swissprot	P08514
Synonyms	ITGA2B,BDPLT16,BDPLT2,CD41,CD41B,GP2B,GPIIb,GT,GTA,HPA3,PPP1R93

Product Information

Calculated MW	103kDa/109kDa/113kDa
Observed MW	135kDa
Buffer	PBS with 0.02% sodium azide, 50% glycerol, pH7.3.
Purify	Affinity purification
Dilution	WB 1:500-1:2000 IF 1:10-1:100

Background

This gene encodes a member of the integrin alpha chain family of proteins. The encoded preproprotein is proteolytically processed to generate light and heavy chains that associate through disulfide linkages to form a subunit of the alpha-IIb/beta-3 integrin cell adhesion receptor. This receptor plays a crucial role in the blood coagulation system, by mediating platelet aggregation. Mutations in this gene are associated with platelet-type bleeding disorders, which are characterized by a failure of platelet aggregation, including Glanzmann thrombasthenia.

For Research Use Only

Thank you for your recent purchase.
 If you would like to learn more about antibodies, please visit www.elabscience.com.

**Focus on your research
 Service for life science**

Applications:WB-Western Blot IHC-Immunohistochemistry IF-Immunofluorescence IP-Immunoprecipitation FC-Flow cytometry ChIP-Chromatin Immunoprecipitation Reactivity: H-Human R-Rat M-Mouse Mk-Monkey Dg-Dog Ch-Chicken Hm-Hamster Rb-Rabbit Sh-Sheep Pg-Pig Z-Zebrafish X-Xenopus C-Cow.